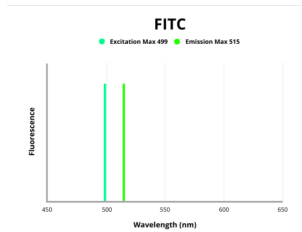


## Interleukin 8 Receptor Beta / IL8RB (CXCR2) Antibody (FITC)

Catalogue No.: abx304229



Fluorescence emission spectra of FITC.

CXCR2 Antibody (FITC) is a Rabbit Polyclonal against CXCR2 conjugated to FITC.

|                               |   |
|-------------------------------|---|
| <b>Target:</b>                | Interleukin 8 Receptor Beta / IL8RB (CXCR2)   |
| <b>Clonality:</b>             | Polyclonal  |
| <b>Reactivity:</b>            | Human   |
| <b>Host:</b>                  | Rabbit  |
| <b>Recommended dilutions:</b> | Optimal dilutions/concentrations should be determined by the end user.                  |
| <b>Conjugation:</b>           | FITC  |
| <b>Excitation/Emission:</b>   | 499/515   |
| <b>Laser Line:</b>            | 488   |
| <b>Immunogen:</b>             | Recombinant human C-X-C chemokine receptor type 2 protein (1-40AA).                     |
| <b>Isotype:</b>               | IgG   |
| <b>Form:</b>                  | Liquid  |
| <b>Purity:</b>                | > 95%   |
| <b>Purification:</b>          | Purified by Protein G.  |
| <b>Storage:</b>               | Aliquot and store at -20°C. Avoid exposure to light. Avoid repeated freeze/thaw cycles. |
| <b>UniProt Primary AC:</b>    | P25025 ( <a href="#">UniProt</a> , <a href="#">ExPASy</a> )                             |

# Datasheet

Version: 1.0.0  
Revision date: 13 Mar 2025



**Gene Symbol:** CXCR2

**GeneID:** [3579](#)

**OMIM:** [146928](#)

**KEGG:** hsa:3579

**String:** [9606.ENSP00000319635](#)

**Buffer:** 0.01 M PBS, pH 7.4, 0.03% Proclin-300 and 50% Glycerol.

**Note:** THIS PRODUCT IS FOR RESEARCH USE ONLY. NOT FOR USE IN DIAGNOSTIC, THERAPEUTIC OR COSMETIC PROCEDURES. NOT FOR HUMAN OR ANIMAL CONSUMPTION.

For Reference Only