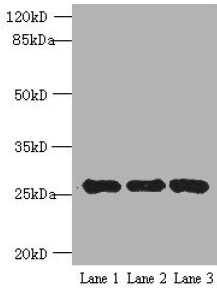
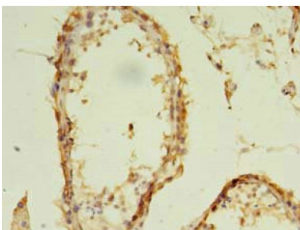


Exosome Component 5 (EXOSC5) Antibody

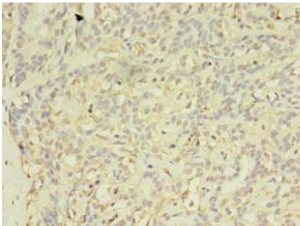
Catalogue No.: abx302857



WB analysis of (1) K562, (2) 293T and (3) HeLa whole cell lysates, using EXOSC5 antibody (5 µg/ml). Predicted band size: 25 kDa, Observed band size: 25 kDa.



IHC-P analysis of human testis tissue, using EXOSC5 antibody (1/100 dilution).



IHC-P analysis of human breast cancer tissue, using EXOSC5 antibody (1/100 dilution).

EXOSC5 Antibody is a Rabbit Polyclonal against EXOSC5.

Target: Exosome Component 5 (EXOSC5)

Clonality: Polyclonal

Reactivity: Human

Tested Applications: ELISA, WB, IHC

Host: Rabbit

Recommended dilutions: WB: 1/500 - 1/2000, IHC: 1/20 - 1/200. Optimal dilutions/concentrations should be determined by the end user.

Conjugation: Unconjugated

Datasheet

Version: 2.0.0
Revision date: 25 Nov 2024



Immunogen:	Recombinant human Exosome complex component RRP46 protein (1-235 AA).
Isotype:	IgG
Form:	Liquid
Purity:	> 95%
Purification:	Purified by Protein G.
Storage:	Aliquot and store at -20°C. Avoid repeated freeze/thaw cycles.
UniProt Primary AC:	Q9NQT4 (UniProt , ExPASy)
Gene Symbol:	EXOSC5
GeneID:	56915
OMIM:	606492
String:	9606.ENSP00000221233
Buffer:	0.01 M PBS, pH 7.4, 0.03% Proclin-300 and 50% Glycerol.
Concentration:	2.5 mg/ml
Note:	This product is for research use only.

For Reference Only