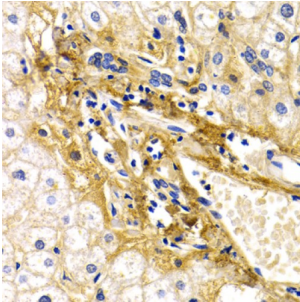
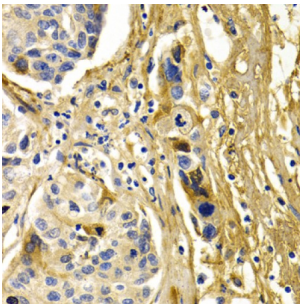


## Complement Factor H (CFH) Antibody

Catalogue No.: abx001778



Immunohistochemistry of paraffin-embedded human liver injury using CFH antibody (abx001778) at dilution of 1/200 (40x lens).



Immunohistochemistry of paraffin-embedded human liver cancer using CFH antibody (abx001778) at dilution of 1/200 (40x lens).

CFH Antibody is a Rabbit Polyclonal antibody against CFH. This gene is a member of the Regulator of Complement Activation (RCA) gene cluster and encodes a protein with twenty short consensus repeat (SCR) domains. This protein is secreted into the bloodstream and has an essential role in the regulation of complement activation, restricting this innate defense mechanism to microbial infections. Mutations in this gene have been associated with hemolytic-uremic syndrome (HUS) and chronic hypocomplementemic nephropathy. Alternate transcriptional splice variants, encoding different isoforms, have been characterized.

**Target:** Complement Factor H (CFH)

**Clonality:** Polyclonal

**Reactivity:** Human, Mouse, Rat

**Tested Applications:** WB, IHC, IF/ICC

**Host:** Rabbit

**Recommended dilutions:** WB: 1/500 - 1/1000, IHC-P: 1/50 - 1/200, IF/ICC: 1/50 - 1/200. Not tested in IHC-F. Optimal dilutions/concentrations should be determined by the end user.

**Conjugation:** Unconjugated

**Immunogen:** Recombinant fusion protein containing a sequence corresponding to amino acids 19-323 of human Complement factor H.

**Isotype:** IgG

# Datasheet

Version: 2.0.0  
Revision date: 03 Dec 2024



|                            |  |
|----------------------------|--|
| <b>Form:</b>               | Liquid   |
| <b>Purification:</b>       | Purified by affinity chromatography.                           |
| <b>Storage:</b>            | Aliquot and store at -20°C. Avoid repeated freeze/thaw cycles. |
| <b>UniProt Primary AC:</b> | P08603 ( <a href="#">UniProt</a> , <a href="#">ExPASy</a> )    |
| <b>Gene Symbol:</b>        | CFH  |
| <b>GeneID:</b>             | <a href="#">3075</a>   |
| <b>NCBI Accession:</b>     | NP_000177.2  |
| <b>Molecular Weight:</b>   | Calculated MW: 139 kDa<br>Observed MW: 150 kDa                 |
| <b>Buffer:</b>             | PBS, pH 7.3, containing 0.05% Proclin-300, 50% glycerol.       |
| <b>Concentration:</b>      | > 0.2 mg/ml  |
| <b>Note:</b>               | This product is for research use only.                         |

For Reference Only