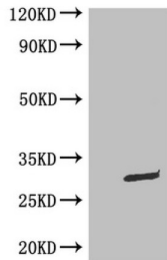


Datasheet

Version: 3.0.0
Revision date: 24 Nov 2024

Green Fluorescent Protein (GFP) Antibody

Catalogue No.: abx210090



WB: Mouse Anti-eGFP monoclonal antibody at 0.1ug/ml
Lane 1: HEK-293 cell lysate
Lane 2: GFP transfected HEK-293 cell lysate
Secondary
Goat polyclonal to Mouse IgG at 1/5000 dilution
Predicted band size: 30 kDa
Observed band size: 30 kDa

GFP Antibody is a Mouse Monoclonal against GFP.

Target:	Green Fluorescent Protein (GFP)
Clonality:	Monoclonal
Reactivity:	General
Tested Applications:	ELISA, WB, IP
Host:	Mouse
Recommended dilutions:	WB: 1/500 - 1/5000, IP: 1/200 - 1/2000. Optimal dilutions/concentrations should be determined by the end user.
Conjugation:	Unconjugated
Immunogen:	Recombinant GFP Protein
Isotype:	IgG _{2b}
Form:	Liquid
Purity:	> 95%
Purification:	Purified by Protein G.
Storage:	Aliquot and store at -20°C. Avoid repeated freeze/thaw cycles.
Buffer:	0.01 M PBS, pH 7.4, 50% glycerol and 0.03% Proclin-300.
Note:	This product is for research use only.