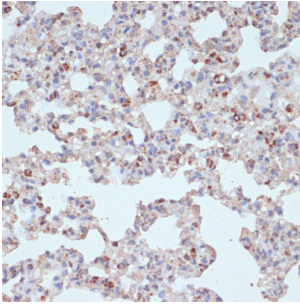
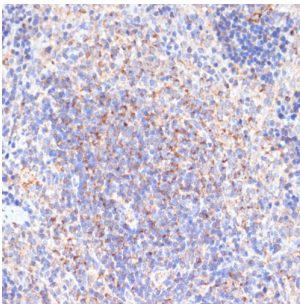


## Platelet Derived Growth Factor Receptor Beta (PDGFRB) Antibody

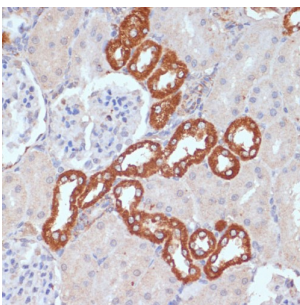
Catalogue No.: abx001792



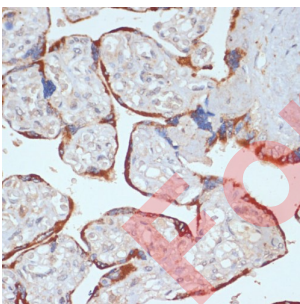
Immunohistochemistry of paraffin-embedded Rat lung using PDGFR beta Antibody (1/100 dilution, 40x lens).



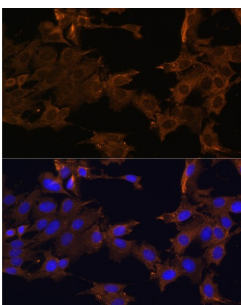
Immunohistochemistry of paraffin-embedded Rat spleen using PDGFR beta Antibody (1/100 dilution, 40x lens).



Immunohistochemistry of paraffin-embedded Rat kidney using PDGFR beta Antibody (1/100 dilution, 40x lens).



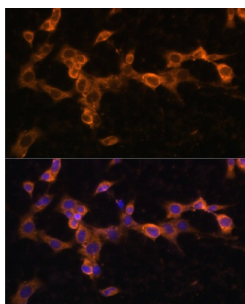
Immunohistochemistry of paraffin-embedded Human placenta using PDGFR beta Antibody (1/100 dilution, 40x lens).



Immunofluorescence analysis of C6 cells using PDGFR beta Antibody (1/100 dilution). Blue: DAPI for nuclear staining.

# Datasheet

Version: 3.0.0  
Revision date: 12 Mar 2025



Immunofluorescence analysis of NIH/3T3 cells using PDGFR beta Antibody (1/100 dilution).  
Blue: DAPI for nuclear staining.

PDGFRB Antibody is a Rabbit Polyclonal antibody against PDGFRB. This gene encodes a cell surface tyrosine kinase receptor for members of the platelet-derived growth factor family. These growth factors are mitogens for cells of mesenchymal origin. The identity of the growth factor bound to a receptor monomer determines whether the functional receptor is a homodimer or a heterodimer, composed of both platelet-derived growth factor receptor alpha and beta polypeptides. This gene is flanked on chromosome 5 by the genes for granulocyte-macrophage colony-stimulating factor and macrophage-colony stimulating factor receptor; all three genes may be implicated in the 5-q syndrome. A translocation between chromosomes 5 and 12, that fuses this gene to that of the translocation, ETV6, leukemia gene, results in chronic myeloproliferative disorder with eosinophilia.

<b>Target:</b>	Platelet Derived Growth Factor Receptor Beta (PDGFRB)
<b>Clonality:</b>	Polyclonal
<b>Reactivity:</b>	Human, Mouse, Rat
<b>Tested Applications:</b>	IHC, IF/ICC
<b>Host:</b>	Rabbit
<b>Recommended dilutions:</b>	IHC-P: 1/50 - 1/200, IF/ICC: 1/50 - 1/200. Not tested in IHC-F. Optimal dilutions/concentrations should be determined by the end user.
<b>Conjugation:</b>	Unconjugated
<b>Immunogen:</b>	Recombinant fusion protein corresponding to human PDGFR beta
<b>Isotype:</b>	IgG
<b>Form:</b>	Liquid
<b>Purification:</b>	Purified by affinity chromatography.
<b>Storage:</b>	Aliquot and store at -20°C. Avoid repeated freeze/thaw cycles.
<b>UniProt Primary AC:</b>	P09619 ( <a href="#">UniProt</a> , <a href="#">ExPASy</a> )
<b>Gene Symbol:</b>	PDGFRB

# Datasheet

Version: 3.0.0  
Revision date: 12 Mar 2025

**GeneID:** [5159](#)

**NCBI Accession:** NP\_002600.1

**KEGG:** hsa:5159

**String:** [9606.ENSP00000261799](#)

**Buffer:** PBS, pH 7.3, containing 0.02% sodium azide, 50% glycerol.

**Concentration:** 1 mg/ml

**Note:** THIS PRODUCT IS FOR RESEARCH USE ONLY. NOT FOR USE IN DIAGNOSTIC, THERAPEUTIC OR COSMETIC PROCEDURES. NOT FOR HUMAN OR ANIMAL CONSUMPTION.

For Reference Only