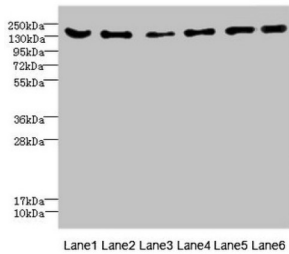
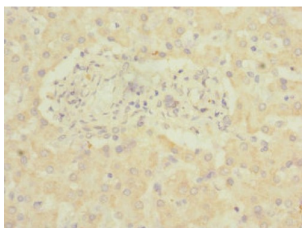


Adhesion G Protein-Coupled Receptor G6 (ADGRG6) Antibody

Catalogue No.: abx322643



WB analysis of (1) mouse brain tissue, (2) mouse lung tissue, (3) 293T whole cell lysates, (4) HepG2 whole cell lysates, (5) Jurkat whole cell lysates, and (6) HeLa whole cell lysates, using GPR126 antibody (4.61 µg/ml). Predicted band size: 137, 134, 140 kDa. Observed band size: 137 kDa.



IHC-P analysis of human liver tissue, using GPR126 antibody (1/100 dilution).

ADGRG6 Antibody is a Rabbit Polyclonal against ADGRG6.

Target:	Adhesion G Protein-Coupled Receptor G6 (ADGRG6)
Clonality:	Polyclonal
Reactivity:	Human, Mouse
Tested Applications:	ELISA, WB, IHC
Host:	Rabbit
Recommended dilutions:	WB: 1/1000 - 1/5000, IHC: 1/20 - 1/200. Optimal dilutions/concentrations should be determined by the end user.
Conjugation:	Unconjugated
Immunogen:	Recombinant human G-protein coupled receptor 126 protein (40-300 AA).
Isotype:	IgG
Form:	Liquid
Purification:	Antigen Affinity Chromatography.

Datasheet

Version: 3.0.0
Revision date: 09 Nov 2024



Storage: Aliquot and store at -20°C. Avoid repeated freeze/thaw cycles.

UniProt Primary AC: Q86SQ4 ([UniProt](#), [ExPASy](#))

Gene Symbol: ADGRG6

GeneID: [57211](#)

OMIM: [606255](#)

NCBI Accession: NP_001027566.1

HGNC: 13841

KEGG: hsa:57211

Ensembl: ENSG00000112414

String: [9606.ENSP00000356581](#)

Buffer: PBS, pH 7.3, containing 0.02% sodium azide and 50% glycerol.

Concentration: 1.32 mg/ml

Note: This product is for research use only.

For Reference Only