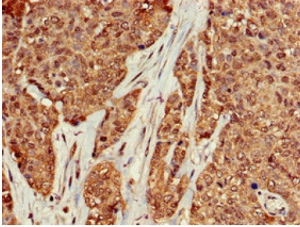
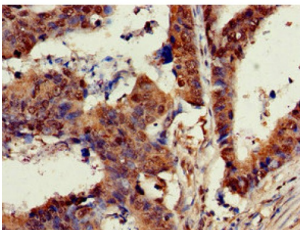


GTPase KRas (KRAS) Antibody

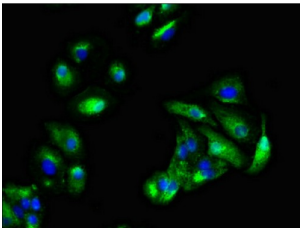
Catalogue No.: abx302384



IHC-P analysis of human ovarian cancer tissue, using KRAS antibody (1/100 dilution).



IHC-P analysis of human colon cancer tissue, using KRAS antibody (1/100 dilution).



IF analysis of HepG2 cells, using KRAS antibody (1/100 dilution) and AF488-conjugated Goat anti-Rabbit IgG (H+L).

KRAS Antibody is a Rabbit Polyclonal against KRAS.

Target: GTPase KRas (KRAS)

Clonality: Polyclonal

Reactivity: Human

Tested Applications: ELISA, IHC, IF/ICC

Host: Rabbit

Recommended dilutions: IHC: 1/20 - 1/200, IF/ICC: 1/50 - 1/200. Optimal dilutions/concentrations should be determined by the end user.

Conjugation: Unconjugated

Datasheet

Version: 2.0.0
Revision date: 17 Feb 2025



Immunogen:	Recombinant Human GTPase KRas protein (2-168 AA).
Isotype:	IgG
Form:	Liquid
Purity:	> 95%
Purification:	Purified by Protein G.
Storage:	Aliquot and store at -20°C. Avoid repeated freeze/thaw cycles.
UniProt Primary AC:	P01116 (UniProt , ExPASy)
Gene Symbol:	KRAS
GeneID:	3845
OMIM:	190070
NCBI Accession:	NP_004976.2
KEGG:	hsa:3845
String:	9606.ENSP00000256078
Buffer:	0.01 M PBS, pH 7.4, 0.03% Proclin-300 and 50% Glycerol.
Concentration:	1 mg/ml
Note:	This product is for research use only.

For Reference Only