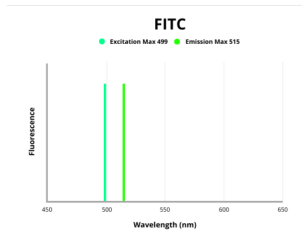


Leucine Rich Repeat Containing Protein 15 (LRRC15) Antibody (FITC)

Catalogue No.: abx308817



Fluorescence emission spectra of FITC.

LRRC15 Antibody (FITC) is a Rabbit Polyclonal against LRRC15 conjugated to FITC.

Target:	Leucine Rich Repeat Containing Protein 15 (LRRC15)
Clonality:	Polyclonal
Reactivity:	Human
Host:	Rabbit
Recommended dilutions:	Optimal dilutions/concentrations should be determined by the end user.
Conjugation:	FITC
Excitation/Emission:	499/515
Laser Line:	488
Immunogen:	Recombinant human Leucine-rich repeat-containing protein 15 protein (301-538 AA).
Isotype:	IgG
Form:	Liquid
Purity:	> 95%
Purification:	Purified by Protein G.
Storage:	Aliquot and store at -20°C. Avoid exposure to light. Avoid repeated freeze/thaw cycles.
UniProt Primary AC:	Q8TF66 (UniProt , ExPASy)

Datasheet

Version: 3.0.0
Revision date: 10 Mar 2025



Gene Symbol: LRRC15

GeneID: [131578](#)

NCBI Accession: NP_001128529.2, NM_001135057.2, NP_570843.2, NM_130830.4

KEGG: hsa:131578

String: [9606.ENSP00000413707](#)

Buffer: 0.01 M PBS, pH 7.4, 0.03% Proclin-300 and 50% Glycerol.

Concentration: 0.25 mg/ml

Note: THIS PRODUCT IS FOR RESEARCH USE ONLY. NOT FOR USE IN DIAGNOSTIC, THERAPEUTIC OR COSMETIC PROCEDURES. NOT FOR HUMAN OR ANIMAL CONSUMPTION.

For Reference Only