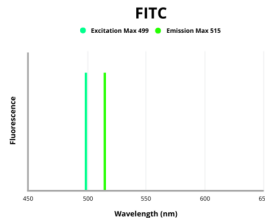


Mitogen-Activated Protein Kinase Kinase 2 (MAP2K2) Antibody (FITC)

Catalogue No.: abx314957



Fluorescence emission spectra of FITC.

MAP2K2 Antibody (FITC) is a Rabbit Polyclonal against MAP2K2 conjugated to FITC.

Target:	Mitogen-Activated Protein Kinase Kinase 2 (MAP2K2)
Clonality:	Polyclonal
Reactivity:	Human
Host:	Rabbit
Recommended dilutions:	Optimal dilutions/concentrations should be determined by the end user.
Conjugation:	FITC
Excitation/Emission:	499/515
Laser Line:	488
Immunogen:	Recombinant Human Dual specificity mitogen-activated protein kinase kinase 2 protein (264-400AA).
Isotype:	IgG
Form:	Liquid
Purity:	> 95%
Purification:	Purified by Protein G.
Storage:	Aliquot and store at -20°C. Avoid exposure to light. Avoid repeated freeze/thaw cycles.
UniProt Primary AC:	P36507 (UniProt , ExPASy)

Datasheet

Version: 1.0.0
Revision date: 31 Jan 2025



Gene Symbol: MAP2K2

GeneID: [5605](#)

OMIM: [601263](#)

KEGG: hsa:5605

String: [9606.ENSP00000262948](#)

Buffer: 0.01 M PBS, pH 7.4, 0.03% Proclin-300 and 50% Glycerol.

Note: This product is for research use only.

For Reference Only