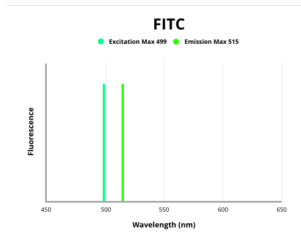


## Probable Phosphatidylethanolamine Transferase Mcr-1 (MCR1) Antibody (FITC)

Catalogue No.: abx300764



Fluorescence emission spectra of FITC.

mcr1 Antibody (FITC) is a Rabbit Polyclonal against mcr1 conjugated to FITC.

<b>Target:</b>	Probable Phosphatidylethanolamine Transferase Mcr-1 (MCR1)
<b>Clonality:</b>	Polyclonal
<b>Reactivity:</b>	E. coli
<b>Host:</b>	Rabbit
<b>Recommended dilutions:</b>	Optimal dilutions/concentrations should be determined by the end user.
<b>Conjugation:</b>	FITC
<b>Excitation/Emission:</b>	499/515
<b>Laser Line:</b>	488
<b>Immunogen:</b>	Recombinant Escherichia coli Probable phosphatidylethanolamine transferase Mcr-1 protein (1-541 AA).
<b>Isotype:</b>	IgG
<b>Form:</b>	Liquid
<b>Purity:</b>	> 95%
<b>Purification:</b>	Purified by Protein G.
<b>Storage:</b>	Aliquot and store at -20°C. Avoid exposure to light. Avoid repeated freeze/thaw cycles.

# Datasheet

Version: 3.0.0

Revision date: 12 Jan 2025



**UniProt Primary AC:** A0A0R6L508 ([UniProt](#), [ExPASy](#))

**Gene Symbol:** MCR1

**Buffer:** 0.01 M PBS, pH 7.4, 0.03% Proclin-300 and 50% Glycerol.

**Note:** This product is for research use only.

For Reference Only