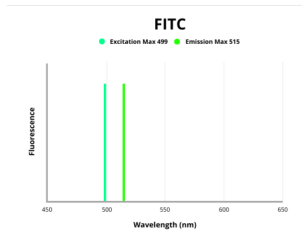


## Myosin Light Chain Kinase, Smooth Muscle (MYLK) Antibody (FITC)

Catalogue No.: abx317372



Fluorescence emission spectra of FITC.

MYLK Antibody (FITC) is a Rabbit Polyclonal against MYLK conjugated to FITC.

<b>Target:</b>	Myosin Light Chain Kinase, Smooth Muscle (MYLK)
<b>Clonality:</b>	Polyclonal
<b>Reactivity:</b>	Human
<b>Host:</b>	Rabbit
<b>Recommended dilutions:</b>	Optimal dilutions/concentrations should be determined by the end user.
<b>Conjugation:</b>	FITC
<b>Excitation/Emission:</b>	499/515
<b>Laser Line:</b>	488
<b>Immunogen:</b>	Recombinant Human Myosin light chain kinase, smooth muscle protein (290-398AA).
<b>Isotype:</b>	IgG
<b>Form:</b>	Liquid
<b>Purity:</b>	> 95%
<b>Purification:</b>	Purified by Protein G.
<b>Storage:</b>	Aliquot and store at -20°C. Avoid exposure to light. Avoid repeated freeze/thaw cycles.
<b>UniProt Primary AC:</b>	Q15746 ( <a href="#">UniProt</a> , <a href="#">ExPASy</a> )

# Datasheet

Version: 2.0.0  
Revision date: 13 Mar 2025



**Gene Symbol:** MYLK

**GeneID:** [4638](#)

**OMIM:** [600922](#)

**NCBI Accession:** NP\_001308238.1, NM\_001321309.1, NP\_444253.3, NM\_053025.3

**KEGG:** hsa:4638

**String:** [9606.ENSP00000353452](#)

**Buffer:** 0.01 M PBS, pH 7.4, 0.03% Proclin-300 and 50% Glycerol.

**Note:** THIS PRODUCT IS FOR RESEARCH USE ONLY. NOT FOR USE IN DIAGNOSTIC, THERAPEUTIC OR COSMETIC PROCEDURES. NOT FOR HUMAN OR ANIMAL CONSUMPTION.

For Reference Only