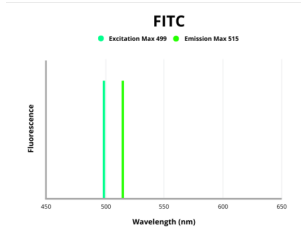


# Programmed Cell Death Protein 1 Ligand 2 (PDCD1LG2) Antibody (FITC)

Catalogue No.: abx304777



Fluorescence emission spectra of FITC.

PDCD1LG2 Antibody (FITC) is a Rabbit Polyclonal against PDCD1LG2 conjugated to FITC.

<b>Target:</b>	Programmed Cell Death Protein 1 Ligand 2 (PDCD1LG2)
<b>Clonality:</b>	Polyclonal
<b>Reactivity:</b>	Human
<b>Host:</b>	Rabbit
<b>Recommended dilutions:</b>	Optimal dilutions/concentrations should be determined by the end user.
<b>Conjugation:</b>	FITC
<b>Excitation/Emission:</b>	499/515
<b>Laser Line:</b>	488
<b>Immunogen:</b>	Recombinant human Programmed cell death 1 ligand 2 protein (20-220AA).
<b>Isotype:</b>	IgG
<b>Form:</b>	Liquid
<b>Purity:</b>	> 95%
<b>Purification:</b>	Purified by Protein G.
<b>Storage:</b>	Aliquot and store at -20°C. Avoid exposure to light. Avoid repeated freeze/thaw cycles.

# Datasheet

Version: 2.0.0

Revision date: 24 Dec 2024



**UniProt Primary AC:** Q9BQ51 ([UniProt](#), [ExPASy](#))

**Gene Symbol:** PDCD1LG2

**GeneID:** [80380](#)

**OMIM:** [605723](#)

**NCBI Accession:** NP\_079515.2, NM\_025239.3

**String:** [9606.ENSP00000380855](#)

**Buffer:** 0.01 M PBS, pH 7.4, 0.03% Proclin-300 and 50% Glycerol.

**Note:** This product is for research use only.

For Reference Only