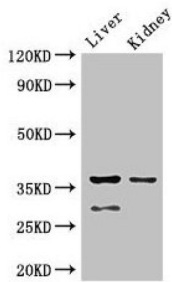
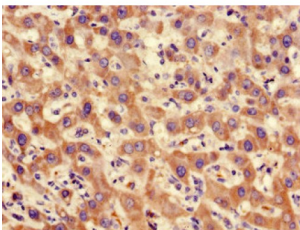


Protein Phosphatase 2 Catalytic Subunit Alpha (PPP2CA) Antibody

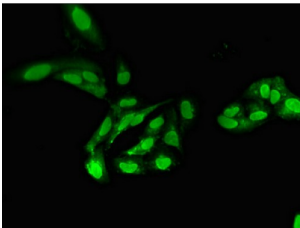
Catalogue No.: abx318495



WB analysis of mouse liver and mouse kidney tissue, using PPP2CA antibody (2.5 µg/ml).
Predicted band size: 36, 30 kDa. Observed band size: 36, 30 kDa.



IHC-P analysis of human liver cancer tissue, using PPP2CA antibody (1/100 dilution).



IF analysis of HeLa cells, using PPP2CA antibody (1/100 dilution) and AF488-conjugated Goat anti-Rabbit IgG (H+L).

PPP2CA Antibody is a Rabbit Polyclonal against PPP2CA.

Target: Protein Phosphatase 2 Catalytic Subunit Alpha (PPP2CA)

Clonality: Polyclonal

Reactivity: Human, Mouse

Tested Applications: ELISA, WB, IHC, IF/ICC

Host: Rabbit

Recommended dilutions: WB: 1/500 - 1/5000, IHC: 1/20 - 1/200, IF/ICC: 1/50 - 1/200. Optimal dilutions/concentrations should be determined by the end user.

Conjugation: Unconjugated

Datasheet

Version: 3.0.0
Revision date: 08 Feb 2025



Immunogen:	Recombinant human Serine/threonine-protein phosphatase 2A catalytic subunit alpha isoform protein (1-309AA).
Isotype:	IgG
Form:	Liquid
Purity:	> 95%
Purification:	Purified by Protein G.
Storage:	Aliquot and store at -20°C. Avoid repeated freeze/thaw cycles.
UniProt Primary AC:	P67775 (UniProt , ExPASy)
Gene Symbol:	PPP2CA
GeneID:	5515
OMIM:	176915
NCBI Accession:	NP_002706.1, NM_002715.2
KEGG:	hsa:5515
String:	9606.ENSP00000418447
Buffer:	0.01 M PBS, pH 7.4, 0.03% Proclin-300 and 50% Glycerol.
Note:	This product is for research use only.

For Reference Only