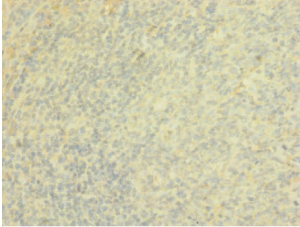
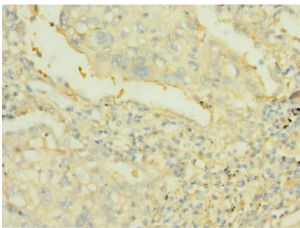


Protein Tyrosine Phosphatase Receptor Type J (PTPRJ) Antibody

Catalogue No.: abx321269



IHC-P analysis of human tonsil tissue, using PTPRJ Antibody (1/100 dilution).



IHC-P analysis of human lung cancer tissue, using PTPRJ Antibody (1/100 dilution).

PTPRJ Antibody is a Rabbit Polyclonal against PTPRJ.

Target:	Protein Tyrosine Phosphatase Receptor Type J (PTPRJ)
Clonality:	Polyclonal
Reactivity:	Human
Tested Applications:	ELISA, IHC
Host:	Rabbit
Recommended dilutions:	IHC: 1/20 - 1/200. Optimal dilutions/concentrations should be determined by the end user.
Conjugation:	Unconjugated
Immunogen:	Recombinant human Receptor-type tyrosine-protein phosphatase eta protein (140-370 AA).
Isotype:	IgG
Form:	Liquid
Purification:	Antigen Affinity Chromatography.

Datasheet

Version: 3.0.0
Revision date: 13 Mar 2025



Storage: Aliquot and store at -20°C. Avoid repeated freeze/thaw cycles.

UniProt Primary AC: Q12913 ([UniProt](#), [ExPASy](#))

Gene Symbol: PTPRJ

GeneID: [5795](#)

OMIM: [600925](#)

NCBI Accession: NP_001091973.1, NM_001098503.1, NP_002834.3, NM_002843.3

KEGG: hsa:5795

String: [9606.ENSP00000400010](#)

Buffer: PBS, pH 7.3, containing 0.02% sodium azide and 50% glycerol.

Concentration: 0.72 mg/ml

Note: THIS PRODUCT IS FOR RESEARCH USE ONLY. NOT FOR USE IN DIAGNOSTIC, THERAPEUTIC OR COSMETIC PROCEDURES. NOT FOR HUMAN OR ANIMAL CONSUMPTION.

For Reference Only