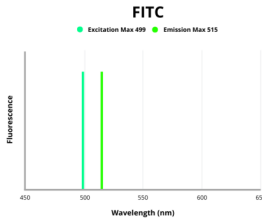


Protein Tyrosine Phosphatase Receptor Type S (PTPRS) Antibody (FITC)

Catalogue No.: abx313316



Fluorescence emission spectra of FITC.

PTPRS Antibody (FITC) is a Rabbit Polyclonal against PTPRS conjugated to FITC.

Target:	Protein Tyrosine Phosphatase Receptor Type S (PTPRS)
Clonality:	Polyclonal
Reactivity:	Human
Host:	Rabbit
Recommended dilutions:	Optimal dilutions/concentrations should be determined by the end user.
Conjugation:	FITC
Excitation/Emission:	499/515
Laser Line:	488
Immunogen:	Recombinant human Receptor-type tyrosine-protein phosphatase S protein (25-128AA).
Isotype:	IgG
Form:	Liquid
Purity:	> 95%
Purification:	Purified by Protein G.
Storage:	Aliquot and store at -20°C. Avoid exposure to light. Avoid repeated freeze/thaw cycles.

Datasheet

Version: 1.0.0

Revision date: 02 Feb 2025



UniProt Primary AC: Q13332 ([UniProt](#), [ExPASy](#))

Gene Symbol: PTPRS

GeneID: [5802](#)

OMIM: [601576](#)

NCBI Accession: NP_002841.3, NM_002850.3

KEGG: hsa:5802

String: [9606.ENSP00000349932](#)

Buffer: 0.01 M PBS, pH 7.4, 0.03% Proclin-300 and 50% Glycerol.

Note: This product is for research use only.

For Reference Only