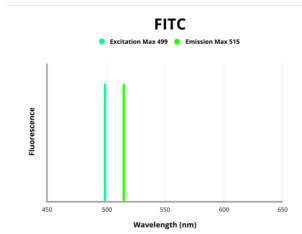


Gingipain R2 (rgpB) Antibody (FITC)

Catalogue No.: abx319599



Fluorescence emission spectra of FITC.

rgpB Antibody (FITC) is a Rabbit Polyclonal conjugated to FITC against Gingipain R2 (*Porphyromonas gingivalis*).

Target:	Gingipain R2 (rgpB)
Clonality:	Polyclonal
Reactivity:	Bacteria
Host:	Rabbit
Recommended dilutions:	Optimal dilutions/concentrations should be determined by the end user.
Conjugation:	FITC
Excitation/Emission:	499/515
Laser Line:	488
Immunogen:	Recombinant <i>Porphyromonas gingivalis</i> Gingipain R2 protein (230-473 AA).
Isotype:	IgG
Form:	Liquid
Purity:	> 95%
Purification:	Purified by Protein G.
Storage:	Aliquot and store at -20°C. Avoid exposure to light. Avoid repeated freeze/thaw cycles.
UniProt Primary AC:	P95493 (UniProt , ExPASy)

Datasheet

Version: 1.0.0
Revision date: 17 Feb 2025



Gene Symbol: RGPB

KEGG: pgi:PG_0506

String: [242619.PG_0506](#)

Buffer: 0.01 M PBS, pH 7.4, 0.03% Proclin-300 and 50% Glycerol.

Note: This product is for research use only.

For Reference Only