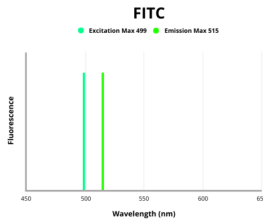


## SETD9 Antibody (FITC)

Catalogue No.: abx309233



Fluorescence emission spectra of FITC.

SETD9 Antibody (FITC) is a Rabbit Polyclonal against SETD9 conjugated to FITC.

**Target:** SETD9

**Clonality:** Polyclonal

**Reactivity:** Human

**Host:** Rabbit

**Recommended dilutions:** Optimal dilutions/concentrations should be determined by the end user.

**Conjugation:** FITC

**Excitation/Emission:** 499/515

**Laser Line:** 488

**Immunogen:** Recombinant human SET domain-containing protein 9 protein (1-299AA).

**Isotype:** IgG

**Form:** Liquid

**Purity:** > 95%

**Purification:** Purified by Protein G.

**Storage:** Aliquot and store at -20°C. Avoid exposure to light. Avoid repeated freeze/thaw cycles.

**UniProt Primary AC:** Q8NE22 ([UniProt](#), [ExpASY](#))

# Datasheet

Version: 1.0.0  
Revision date: 03 Feb 2025



**Gene Symbol:** SETD9

**GeneID:** [133383](#)

**NCBI Accession:** NP\_001165461.1, NM\_001171990.2, NP\_714917.2, NM\_153706.3

**KEGG:** hsa:133383

**String:** [9606.ENSP00000285947](#)

**Buffer:** 0.01 M PBS, pH 7.4, 0.03% Proclin-300 and 50% Glycerol.

**Note:** This product is for research use only.

For Reference Only