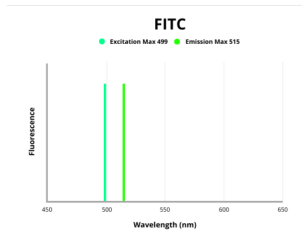


Sideroflexin 2 (SFXN2) Antibody (FITC)

Catalogue No.: abx310257



Fluorescence emission spectra of FITC.

SFXN2 Antibody (FITC) is a Rabbit Polyclonal against SFXN2 conjugated to FITC.

Target: Sideroflexin 2 (SFXN2)

Clonality: Polyclonal

Reactivity: Human

Host: Rabbit

Recommended dilutions: Optimal dilutions/concentrations should be determined by the end user.

Conjugation: FITC

Excitation/Emission: 499/515

Laser Line: 488

Immunogen: Recombinant human Sideroflexin-2 protein (1-99AA).

Isotype: IgG

Form: Liquid

Purity: > 95%

Purification: Purified by Protein G.

Storage: Aliquot and store at -20°C. Avoid exposure to light. Avoid repeated freeze/thaw cycles.

UniProt Primary AC: Q96NB2 ([UniProt](#), [ExPASy](#))

Datasheet

Version: 2.0.0
Revision date: 13 Mar 2025



Gene Symbol: SFXN2

GeneID: [118980](#)

OMIM: [615570](#)

KEGG: hsa:118980

String: [9606.ENSP00000358909](#)

Buffer: 0.01 M PBS, pH 7.4, 0.03% Proclin-300 and 50% Glycerol.

Note: THIS PRODUCT IS FOR RESEARCH USE ONLY. NOT FOR USE IN DIAGNOSTIC, THERAPEUTIC OR COSMETIC PROCEDURES. NOT FOR HUMAN OR ANIMAL CONSUMPTION.

For Reference Only