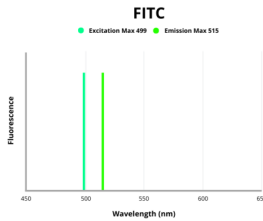


## SLC31A2 Antibody (FITC)

Catalogue No.: abx305344



Fluorescence emission spectra of FITC.

SLC31A2 Antibody (FITC) is a Rabbit Polyclonal against SLC31A2 conjugated to FITC.

**Target:** SLC31A2

**Clonality:** Polyclonal

**Reactivity:** Human

**Host:** Rabbit

**Recommended dilutions:** Optimal dilutions/concentrations should be determined by the end user.

**Conjugation:** FITC

**Excitation/Emission:** 499/515

**Laser Line:** 488

**Immunogen:** Recombinant human Probable low affinity copper uptake protein 2 protein (44-93AA).

**Isotype:** IgG

**Form:** Liquid

**Purity:** > 95%

**Purification:** Purified by Protein G.

**Storage:** Aliquot and store at -20°C. Avoid exposure to light. Avoid repeated freeze/thaw cycles.

**UniProt Primary AC:** O15432 ([UniProt](#), [ExPASy](#))

# Datasheet

Version: 1.0.0  
Revision date: 03 Feb 2025



**Gene Symbol:** SLC31A2

**GeneID:** [1318](#)

**OMIM:** [603088](#)

**KEGG:** hsa:1318

**String:** [9606.ENSP00000259392](#)

**Buffer:** 0.01 M PBS, pH 7.4, 0.03% Proclin-300 and 50% Glycerol.

**Note:** This product is for research use only.

For Reference Only