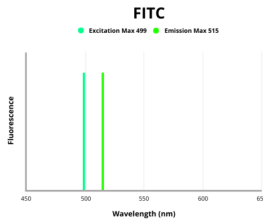


SLC39A11 Antibody (FITC)

Catalogue No.: abx310275



Fluorescence emission spectra of FITC.

SLC39A11 Antibody (FITC) is a Rabbit Polyclonal against SLC39A11 conjugated to FITC.

Target: SLC39A11

Clonality: Polyclonal

Reactivity: Human

Host: Rabbit

Recommended dilutions: Optimal dilutions/concentrations should be determined by the end user.

Conjugation: FITC

Excitation/Emission: 499/515

Laser Line: 488

Immunogen: Recombinant human Zinc transporter ZIP11 protein (93-193AA).

Isotype: IgG

Form: Liquid

Purity: > 95%

Purification: Purified by Protein G.

Storage: Aliquot and store at -20°C. Avoid exposure to light. Avoid repeated freeze/thaw cycles.

UniProt Primary AC: Q8N1S5 ([UniProt](#), [ExPASy](#))

Datasheet

Version: 1.0.0

Revision date: 02 Feb 2025



Gene Symbol: SLC39A11

GeneID: [201266](#)

OMIM: [616508](#)

NCBI Accession: NP_001153242.1, NM_001159770.1

KEGG: hsa:201266

String: [9606.ENSP00000445829](#)

Buffer: 0.01 M PBS, pH 7.4, 0.03% Proclin-300 and 50% Glycerol.

Note: This product is for research use only.

For Reference Only