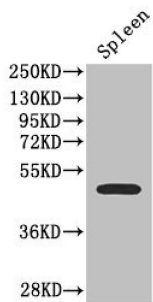
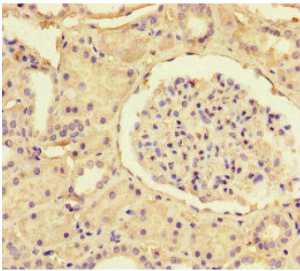


## Somatostatin Receptor Type 2 (SSTR2) Antibody

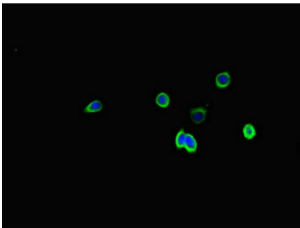
Catalogue No.: abx317864



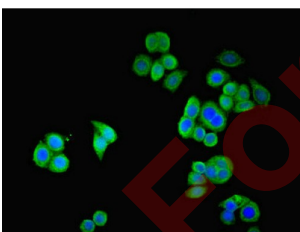
Western blot analysis of Mouse spleen tissue using SSTR2 Antibody (2.7 µg/ml) and Goat Polyclonal Anti-Rabbit IgG (1/50000 dilution). Calculated MW: 42 kDa, 41 kDa. Observed MW: 42 kDa.



IHC-P analysis of Human kidney tissue using SSTR2 Antibody (1/100 dilution).



IF analysis of HepG2 cells using SSTR2 Antibody (1/100 dilution) and AF488-conjugated Goat Anti-Rabbit IgG.



IF analysis of PC-3 cells using SSTR2 Antibody (1/100 dilution) and AF488-conjugated Goat Anti-Rabbit IgG.

SSTR2 Antibody is a Rabbit Polyclonal against SSTR2.

**Target:** Somatostatin Receptor Type 2 (SSTR2)

**Clonality:** Polyclonal

**Reactivity:** Human, Mouse

# Datasheet

Version: 3.0.0  
Revision date: 28 Dec 2024



<b>Tested Applications:</b>	ELISA, WB, IHC, IF/ICC
<b>Host:</b>	Rabbit
<b>Recommended dilutions:</b>	WB: 1/1000 - 1/5000, IHC: 1/20 - 1/200, IF/ICC: 1/50 - 1/200. Optimal dilutions/concentrations should be determined by the end user.
<b>Conjugation:</b>	Unconjugated
<b>Immunogen:</b>	Recombinant human Somatostatin receptor type 2 protein (304-369 AA).
<b>Isotype:</b>	IgG
<b>Form:</b>	Liquid
<b>Purity:</b>	> 95%
<b>Purification:</b>	Purified by Protein G.
<b>Storage:</b>	Aliquot and store at -20°C. Avoid repeated freeze/thaw cycles.
<b>UniProt Primary AC:</b>	P30874 ( <a href="#">UniProt</a> , <a href="#">ExPASy</a> )
<b>Gene Symbol:</b>	SSTR2
<b>GeneID:</b>	<a href="#">6752</a>
<b>OMIM:</b>	<a href="#">182452</a>
<b>NCBI Accession:</b>	NP_001041.1
<b>KEGG:</b>	hsa:6752
<b>String:</b>	<a href="#">9606.ENSP00000350198</a>
<b>Molecular Weight:</b>	Calculated MW: 42 kDa, 41 kDa Observed MW: 42 kDa
<b>Buffer:</b>	0.01 M PBS, pH 7.4, containing 0.03% Proclin-300 and 50% Glycerol.
<b>Concentration:</b>	4 mg/ml
<b>Note:</b>	This product is for research use only.