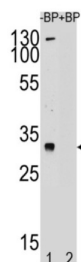
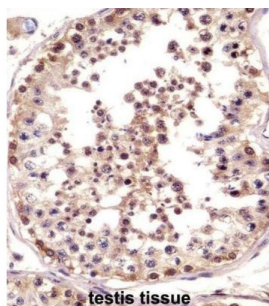


Testis-Specific Y-Encoded Protein 1 (TSPY) Antibody

Catalogue No.: abx025031



WB analysis of LNCAP cell line lysate preincubated (1) without blocking peptide, and (2) with blocking peptide



IHC-P analysis of human testis tissue, with DAB staining.

TSPY may be involved in sperm differentiation and proliferation.

Target: Testis-Specific Y-Encoded Protein 1 (TSPY)

Clonality: Polyclonal

Reactivity: Human

Tested Applications: ELISA, WB, IHC

Host: Rabbit

Recommended dilutions: WB: 1/1000, IHC-P: 1/10 - 1/50. Not tested in IHC-F. Optimal dilutions/concentrations should be determined by the end user.

Conjugation: Unconjugated

Immunogen: KLH-conjugated synthetic peptide between 274-303 amino acids from the C-terminal region of human TSPY.

Isotype: IgG

Form: Liquid

Purification: Purified through a protein A column, followed by peptide affinity purification.

Datasheet

Version: 3.0.0

Revision date: 15 Apr 2025



Storage: Aliquot and store at -20°C. Avoid repeated freeze/thaw cycles.

UniProt Primary AC: Q01534 ([UniProt](#), [ExPASy](#))

KEGG: hsa:100289087, hsa:7258, hsa:728137

Molecular Weight: Calculated MW: 35 kDa

Buffer: PBS containing 0.09% sodium azide.

Note: THIS PRODUCT IS FOR RESEARCH USE ONLY. NOT FOR USE IN DIAGNOSTIC, THERAPEUTIC OR COSMETIC PROCEDURES. NOT FOR HUMAN OR ANIMAL CONSUMPTION.

For Reference Only