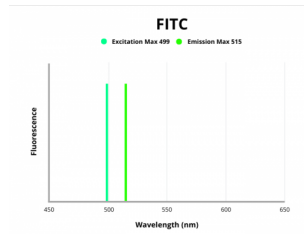


Taste Receptor Type 1 Member 2 (TAS1R2) Antibody (FITC)

Catalogue No.: abx317559



Fluorescence emission spectra of FITC.

TAS1R2 Antibody (FITC) is a Rabbit Polyclonal against TAS1R2 conjugated to FITC.

Target:	Taste Receptor Type 1 Member 2 (TAS1R2)
Clonality:	Polyclonal
Reactivity:	Human
Host:	Rabbit
Recommended dilutions:	Optimal dilutions/concentrations should be determined by the end user.
Conjugation:	FITC
Excitation/Emission:	499/515
Laser Line:	488
Immunogen:	Recombinant Human Taste receptor type 1 member 2 protein (183-362AA).
Isotype:	IgG
Form:	Liquid
Purity:	> 95%
Purification:	Purified by Protein G.
Storage:	Aliquot and store at -20°C. Avoid exposure to light. Avoid repeated freeze/thaw cycles.
UniProt Primary AC:	Q8TE23 (UniProt , ExpASY)

Datasheet

Version: 3.0.0
Revision date: 16 Jul 2024



Gene Symbol: TAS1R2

GeneID: [80834](#)

OMIM: [606226](#)

KEGG: hsa:80834

String: [9606.ENSP00000364520](#)

Buffer: 0.01 M PBS, pH 7.4, 0.03% Proclin-300 and 50% Glycerol.

Concentration: 0.25 mg/ml

Note: This product is for research use only.

For Reference Only