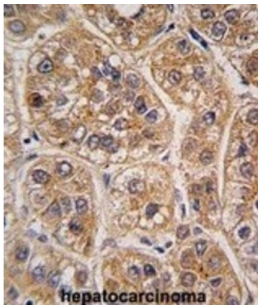


## Aldo-Keto Reductase Family 1 Member A1 (AKR1A1) Antibody

Catalogue No.: abx025100



Aldo-Keto Reductase Family 1 Member A1 (AKR1A1) is a member of the aldo/keto reductase superfamily, which consists of more than 40 known enzymes and proteins. This member, also known as aldehyde reductase, is involved in the reduction of biogenic and xenobiotic aldehydes and is present in virtually every tissue.

**Target:** Aldo-Keto Reductase Family 1 Member A1 (AKR1A1)

**Clonality:** Polyclonal

**Reactivity:** Human

**Tested Applications:** ELISA, WB, IHC

**Host:** Rabbit

**Recommended dilutions:** WB: 1/1000, IHC-P: 1/10 - 1/50. Not tested in IHC-F. Optimal dilutions/concentrations should be determined by the end user.

# Datasheet

Version: 1.0.0  
Revision date: 22 Jan 2025



<b>Conjugation:</b>	Unconjugated
<b>Immunogen:</b>	KLH-conjugated synthetic peptide between 293-325 amino acids from the C-terminal region of human AKR1A1.
<b>Isotype:</b>	IgG
<b>Form:</b>	Liquid
<b>Purification:</b>	Purified Rabbit Polyclonal Antibody.
<b>Storage:</b>	Aliquot and store at -20°C. Avoid repeated freeze/thaw cycles.
<b>UniProt Primary AC:</b>	P14550 ( <a href="#">UniProt</a> , <a href="#">ExPASy</a> )
<b>KEGG:</b>	hsa:10327
<b>String:</b>	<a href="#">9606.ENSP00000361140</a>
<b>Molecular Weight:</b>	Calculated MW: 36.6 kDa
<b>Buffer:</b>	PBS containing 0.09% sodium azide.
<b>Specificity:</b>	Predicted to react with Mouse, Rat, Cow and Pig AKR1A1.
<b>Note:</b>	This product is for research use only.

For Reference Only