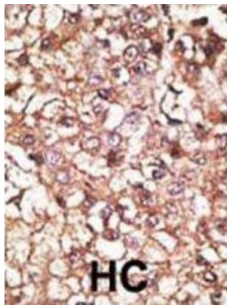


## STIP1 Homology And U-Box Containing Protein 1 (STUB1) Antibody

Catalogue No.: abx025112



CHIP is an E3 ligase for nNOS whose action is facilitated by (and possibly requires) its interaction with nNOS-bound hsp70. Co-chaperone CHIP, possibly with another E3 ligase (s), modulates the ubiquitylation of mutant Cu/Zn-superoxide dismutase and renders them more susceptible for proteasomal degradation. CHIP functions as a negative regulator of AR transcriptional activity by promoting AR degradation. CHIP-Hsc70 complex ubiquitinates phosphorylated tau and enhances cell survival. CHIP can interact with the Smad1/Smad4 proteins and block BMP signal transduction through the ubiquitin-mediated degradation of Smad proteins. CHIP E3 controls both the association of Hsp70/Hsp90 chaperones with ErbB2 and the down-regulation of ErbB2 induced by inhibitors of Hsp90. CHIP is associated with Parkin and enhances its ubiquitin ligase activity related to Parkinson's disease.

<b>Target:</b>	STIP1 Homology And U-Box Containing Protein 1 (STUB1)
<b>Clonality:</b>	Polyclonal
<b>Reactivity:</b>	Human
<b>Tested Applications:</b>	ELISA, WB, IHC

# Datasheet

Version: 1.0.0  
Revision date: 17 Dec 2024



<b>Host:</b>	Rabbit
<b>Recommended dilutions:</b>	WB: 1/1000, IHC-P: 1/50 - 1/100. Not tested in IHC-F. Optimal dilutions/concentrations should be determined by the end user.
<b>Conjugation:</b>	Unconjugated
<b>Immunogen:</b>	KLH-conjugated synthetic peptide between 203-231 amino acids from the C-terminal region of human STUB1.
<b>Isotype:</b>	IgG
<b>Form:</b>	Liquid
<b>Purification:</b>	Purified Rabbit Polyclonal Antibody.
<b>Storage:</b>	Aliquot and store at -20°C. Avoid repeated freeze/thaw cycles.
<b>UniProt Primary AC:</b>	Q9UNE7 ( <a href="#">UniProt</a> , <a href="#">ExPASy</a> )
<b>NCBI Accession:</b>	NP_005852.2
<b>String:</b>	<a href="#">9606.ENSP00000219548</a>
<b>Molecular Weight:</b>	Calculated MW: 34.9 kDa
<b>Buffer:</b>	PBS containing 0.09% sodium azide.
<b>Specificity:</b>	Predicted to react with Mouse and Chicken STUB1.
<b>Note:</b>	This product is for research use only.

For Reference Only