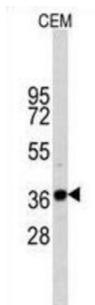


Glyceraldehyde-3-Phosphate Dehydrogenase (GAPDH) Antibody

Catalogue No.: abx025151



The product of this gene catalyzes an important energy-yielding step in carbohydrate metabolism, the reversible oxidative phosphorylation of glyceraldehyde-3-phosphate in the presence of inorganic phosphate and nicotinamide adenine dinucleotide (NAD). The enzyme exists as a tetramer of identical chains. Many pseudogenes similar to this locus are present in the human genome.

Target:	Glyceraldehyde-3-Phosphate Dehydrogenase (GAPDH)
Clonality:	Monoclonal
Reactivity:	Human, Mouse, Rat
Tested Applications:	ELISA, WB, IHC, IF/ICC
Host:	Mouse
Recommended dilutions:	WB: 1/2000 - 1/10000, IHC-P: 1/25, IF/ICC: 1/25. Not tested in IHC-F. Optimal dilutions/concentrations should be determined by the end user.
Conjugation:	Unconjugated
Immunogen:	Human GAPDH recombinant protein
Epitope Region:	GAPDH recombinant protein
Isotype:	IgG ₁
Form:	Liquid
Purification:	Purified through a protein G column, eluted with high and low pH buffers and neutralized immediately, followed by dialysis against PBS.
Storage:	Aliquot and store at -20°C. Avoid repeated freeze/thaw cycles.
UniProt Primary AC:	P04406 (UniProt , ExpASY)

Datasheet

Version: 1.0.0

Revision date: 05 Dec 2024



KEGG: hsa:2597

String: [9606.ENSP00000229239](#)

Molecular Weight: Calculated MW: 36.1 kDa

Buffer: PBS containing 0.09% sodium azide.

Note: This product is for research use only.

For Reference Only