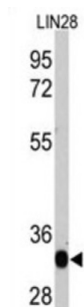
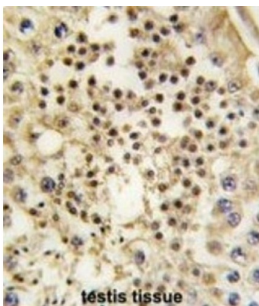
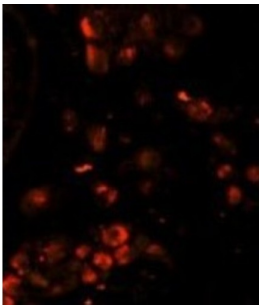


Protein Lin-28 Homolog A (LIN28A) Antibody

Catalogue No.: abx025177



LIN28A Antibody is a Mouse Monoclonal antibody against LIN28A.

Target: Protein Lin-28 Homolog A (LIN28A)

Clonality: Monoclonal

Reactivity: Human

Tested Applications: ELISA, WB, IHC, IF/ICC

Host: Mouse

Recommended dilutions: WB: 1/200 - 1/2000, IHC-P: 1/50 - 1/200, IF/ICC: 1/10 - 1/50. Not tested in IHC-F. Optimal dilutions/concentrations should be determined by the end user.

Conjugation: Unconjugated

Datasheet

Version: 2.0.0
Revision date: 31 Dec 2024



Immunogen:	Human LIN28A recombinant protein
Epitope Region:	LIN28A recombinant protein
Isotype:	IgG ₁ , Kappa
Form:	Liquid
Purification:	Purified through a protein G column, eluted with high and low pH buffers and neutralized immediately, followed by dialysis against PBS.
Storage:	Aliquot and store at -20°C. Avoid repeated freeze/thaw cycles.
UniProt Primary AC:	Q9H9Z2 (UniProt , ExPASy)
NCBI Accession:	NP_078950.1
String:	9606.ENSP00000363314
Molecular Weight:	Calculated MW: 22.7 kDa
Buffer:	PBS containing 0.09% sodium azide.
Note:	This product is for research use only.

For Reference Only