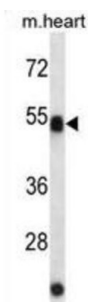


Autophagy Related 4C Cysteine Peptidase (ATG4C) Antibody

Catalogue No.: abx025299



Autophagy is the process by which endogenous proteins and damaged organelles are destroyed intracellularly. Autophagy is postulated to be essential for cell homeostasis and cell remodeling during differentiation, metamorphosis, non-apoptotic cell death, and aging. Reduced levels of autophagy have been described in some malignant tumors, and a role for autophagy in controlling the unregulated cell growth linked to cancer has been proposed. This gene encodes a member of the autophagin protein family. The encoded protein is also designated as a member of the C-54 family of cysteine proteases. Alternate transcriptional splice variants, encoding the same protein, have been characterized. [provided by RefSeq].

Target:	Autophagy Related 4C Cysteine Peptidase (ATG4C)
Clonality:	Monoclonal
Reactivity:	Mouse
Tested Applications:	ELISA, WB
Host:	Mouse
Recommended dilutions:	WB: 1/100. Optimal dilutions/concentrations should be determined by the end user.
Conjugation:	Unconjugated
Immunogen:	Human ATG4C recombinant protein.
Isotype:	IgG ₁ , Kappa
Form:	Liquid
Purification:	Purified through a protein G column, eluted with high and low pH buffers and neutralized immediately, followed by dialysis against PBS.
Storage:	Aliquot and store at -20°C. Avoid repeated freeze/thaw cycles.
UniProt Primary AC:	Q96DT6 (UniProt , ExpASY)

Datasheet

Version: 2.0.0
Revision date: 22 Nov 2024



KEGG: hsa:84938

String: [9606.ENSP00000322159](#)

Molecular Weight: Calculated MW: 52.5 kDa

Buffer: PBS containing 0.09% sodium azide.

Note: This product is for research use only.

For Reference Only