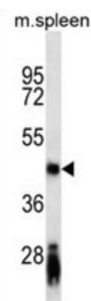


B-Cell Antigen Receptor Complex-Associated Protein Alpha Chain (CD79A) Antibody

Catalogue No.: abx025316



This product is currently in development. The lead time for this product may be several months. Please contact us at info@abbexa.com for an updated lead time before purchasing this product.

The B lymphocyte antigen receptor is a multimeric complex that includes the antigen-specific component, surface immunoglobulin (Ig). Surface Ig non-covalently associates with two other proteins, Ig-alpha and Ig-beta, which are necessary for expression and function of the B-cell antigen receptor. This gene encodes the Ig-alpha protein of the B-cell antigen component. Alternatively spliced transcript variants encoding different isoforms have been described. This antibody is supplied as crude ascites.

Target:	B-Cell Antigen Receptor Complex-Associated Protein Alpha Chain (CD79A)
Clonality:	Monoclonal
Reactivity:	Mouse
Tested Applications:	ELISA, WB
Host:	Mouse
Recommended dilutions:	WB: 1/100 - 1/2000. Optimal dilutions/concentrations should be determined by the end user.
Conjugation:	Unconjugated
Immunogen:	KLH-conjugated synthetic peptide between 160-188 amino acids from the C-terminal region of human CD79A.
Isotype:	IgG ₁
Form:	Liquid
Purification:	Unpurified crude ascites.

Datasheet

Version: 2.0.0

Revision date: 28 Apr 2025



Storage: Aliquot and store at -20°C. Avoid repeated freeze/thaw cycles.

UniProt Primary AC: P11912 ([UniProt](#), [ExPASy](#))

KEGG: hsa:973

String: [9606.ENSP00000221972](#)

Molecular Weight: Calculated MW: 25 kDa

Buffer: Ascites containing 0.09% sodium azide.

Note: THIS PRODUCT IS FOR RESEARCH USE ONLY. NOT FOR USE IN DIAGNOSTIC, THERAPEUTIC OR COSMETIC PROCEDURES. NOT FOR HUMAN OR ANIMAL CONSUMPTION.

For Reference Only