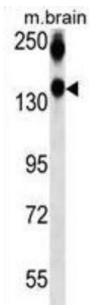


Neural Cell Adhesion Molecule 1 / CD56 (NCAM1) Antibody

Catalogue No.: abx025335



This protein is a cell adhesion molecule involved in neuron-neuron adhesion, neurite fasciculation, outgrowth of neurites, etc.

Target:	Neural Cell Adhesion Molecule 1 / CD56 (NCAM1)
Clonality:	Monoclonal
Reactivity:	Mouse
Tested Applications:	ELISA, WB
Host:	Mouse
Recommended dilutions:	WB: 1/500 - 1/1000. Optimal dilutions/concentrations should be determined by the end user.
Conjugation:	Unconjugated
Immunogen:	KLH-conjugated synthetic peptide between 830-858 amino acids from human NCAM1.
Isotype:	IgG ₁ , Kappa
Form:	Liquid
Purification:	Purified through a protein G column, eluted with high and low pH buffers and neutralized immediately, followed by dialysis against PBS.
Storage:	Aliquot and store at -20°C. Avoid repeated freeze/thaw cycles.
UniProt Primary AC:	P13591 (UniProt , ExPASy)
Molecular Weight:	Calculated MW: 94.6 kDa
Buffer:	PBS containing 0.09% sodium azide.

Datasheet

Version: 1.0.0

Revision date: 11 Dec 2024



Note: This product is for research use only.

For Reference Only