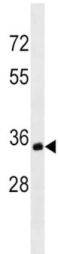


B-Lymphocyte Antigen CD20 (MS4A1) Antibody

Catalogue No.: abx025364



This gene encodes a member of the membrane-spanning 4A gene family. Members of this nascent protein family are characterized by common structural features and similar intron/exon splice boundaries and display unique expression patterns among hematopoietic cells and nonlymphoid tissues. This gene encodes a B-lymphocyte surface molecule which plays a role in the development and differentiation of B-cells into plasma cells. This family member is localized to 11q12, among a cluster of family members. Alternative splicing of this gene results in two transcript variants which encode the same protein.

Target:	B-Lymphocyte Antigen CD20 (MS4A1)
Clonality:	Monoclonal
Reactivity:	Human
Tested Applications:	ELISA, WB, IHC
Host:	Mouse
Recommended dilutions:	WB: 1/500 - 1/1000, IHC-P: 1/100 - 1/1000. Not tested in IHC-F. Optimal dilutions/concentrations should be determined by the end user.
Conjugation:	Unconjugated
Immunogen:	KLH-conjugated synthetic peptide between 266-294 amino acids from the C-terminal region of human MS4A1/CD20.
Isotype:	IgG ₁
Form:	Liquid
Purification:	Purified Mouse Monoclonal Antibody.
Storage:	Aliquot and store at -20°C. Avoid repeated freeze/thaw cycles.
UniProt Primary AC:	P11836 (UniProt , ExPASy)

Datasheet

Version: 3.0.0
Revision date: 12 Mar 2025



KEGG: hsa:931

String: [9606.ENSP00000314620](#)

Molecular Weight: Calculated MW: 33.1 kDa

Buffer: PBS containing 0.09% sodium azide.

Note: THIS PRODUCT IS FOR RESEARCH USE ONLY. NOT FOR USE IN DIAGNOSTIC, THERAPEUTIC OR COSMETIC PROCEDURES. NOT FOR HUMAN OR ANIMAL CONSUMPTION.

For Reference Only