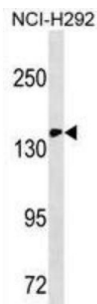


ITGAX / CD11c Antibody

Catalogue No.: abx025383



This product is currently in development. The lead time for this product may be several months. Please contact us at info@abbexa.com for an updated lead time before purchasing this product.

This gene encodes the integrin alpha X chain protein. Integrins are heterodimeric integral membrane proteins composed of an alpha chain and a beta chain. This protein combines with the beta 2 chain (ITGB2) to form a leukocyte-specific integrin referred to as inactivated-C3b (iC3b) receptor 4 (CR4). The alpha X beta 2 complex seems to overlap the properties of the alpha M beta 2 integrin in the adherence of neutrophils and monocytes to stimulated endothelium cells, and in the phagocytosis of complement coated particles. This antibody is supplied as crude ascites.

Target:	ITGAX/CD11c
Clonality:	Monoclonal
Reactivity:	Human
Tested Applications:	ELISA, WB
Host:	Mouse
Recommended dilutions:	WB: 1/500 - 1/2000. Optimal dilutions/concentrations should be determined by the end user.
Conjugation:	Unconjugated
Immunogen:	KLH-conjugated synthetic peptide between 246-274 amino acids from the N-terminal region of human ITGAX/CD11c.
Isotype:	IgG ₁
Form:	Liquid
Purification:	Unpurified crude ascites.
Storage:	Aliquot and store at -20°C. Avoid repeated freeze/thaw cycles.

Datasheet

Version: 1.0.0

Revision date: 23 Feb 2025



UniProt Primary AC: P20702 ([UniProt](#), [ExPASy](#))

KEGG: hsa:3687

String: [9606.ENSP00000454623](#)

Molecular Weight: Calculated MW: 128 kDa

Buffer: Ascites containing 0.09% sodium azide.

Note: This product is for research use only.

For Reference Only