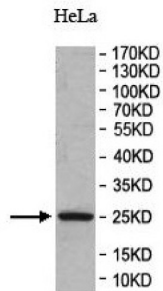


CD9 Antigen (CD9) Antibody

Catalogue No.: abx340097



WB analysis of HeLa cell lysates, using CD9 Antigen (CD9) Antibody (dilution 1/8000).

CD9 Antibody is a Rabbit Polyclonal against CD9.

Target:	CD9 Antigen (CD9)
Clonality:	Polyclonal
Reactivity:	Human, Rat
Tested Applications:	ELISA, WB
Host:	Rabbit
Recommended dilutions:	ELISA: 1/20000 - 1/80000, WB: 1/8000. Optimal dilutions/concentrations should be determined by the end user.
Conjugation:	Unconjugated
Immunogen:	A peptide corresponding to the N-terminal region of human CD9 protein.
Isotype:	IgG
Form:	Lyophilized
Purification:	Purified by antigen affinity column chromatography.
Reconstitution:	Reconstitute in 100 µl of sterile distilled H ₂ O with 50% glycerol.
Storage:	Store at -20 °C. Avoid repeated freeze/thaw cycles.
NCBI Accession:	NM_001769.3
Molecular Weight:	Observed MW: 25 kDa

Datasheet

Version: 2.0.0

Revision date: 23 Feb 2025



Buffer: Prior to lyophilization: 1% BSA and 0.02% NaN₃.

Concentration: Lyophilized form: Not applicable.
After reconstitution: 1 mg/ml.

Note: This product is for research use only.

For Reference Only