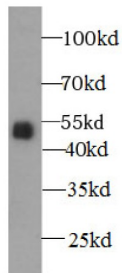


## Lactosylceramide 4-Alpha-Galactosyltransferase (A4GALT) Antibody

Catalogue No.: abx230014



WB analysis of RAW 264.7 cells, using A4GALT antibody (1/1000 dilution).

Lactosylceramide 4-Alpha-Galactosyltransferase (A4GALT) Antibody is a Rabbit Polyclonal against Lactosylceramide 4-Alpha-Galactosyltransferase (A4GALT).

<b>Target:</b>	Lactosylceramide 4-Alpha-Galactosyltransferase (A4GALT)
<b>Clonality:</b>	Polyclonal
<b>Reactivity:</b>	Human, Mouse
<b>Tested Applications:</b>	ELISA, WB
<b>Host:</b>	Rabbit
<b>Recommended dilutions:</b>	WB: 1/500 - 1/5000. Optimal dilutions/concentrations should be determined by the end user.
<b>Conjugation:</b>	Unconjugated
<b>Immunogen:</b>	alpha 1, 4-galactosyltransferase
<b>Isotype:</b>	IgG
<b>Form:</b>	Liquid
<b>Purity:</b>	≥ 95% (SDS-PAGE)
<b>Purification:</b>	Purified by immunogen affinity chromatography.
<b>Storage:</b>	Aliquot and store at -20°C. Avoid repeated freeze/thaw cycles.
<b>Validity:</b>	12 months.

# Datasheet

Version: 2.0.0  
Revision date: 05 Dec 2024



**UniProt Primary AC:** Q9NPC4 ([UniProt](#), [ExpASy](#)) Q67BJ4 ([UniProt](#), [ExpASy](#))

**Gene Symbol:** A4GALT

**GeneID:** [53947](#) [239559](#)

**OMIM:** [111400](#)

**HGNC:** 18149

**Ensembl:** ENSG00000128274

**String:** [9606.ENSP00000384794](#) [10090.ENSMUSP00000129719](#)

**Molecular Weight:** Observed MW: 41 kDa

**Buffer:** PBS, pH 7.3, with 0.02% sodium azide and 50% glycerol.

**Concentration:** 2 mg/ml

**Note:** This product is for research use only.

For Reference Only