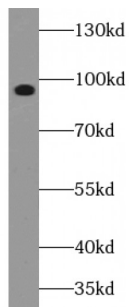
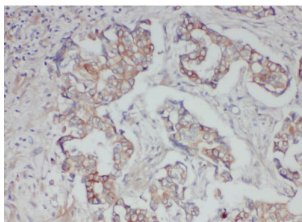


ATP-Binding Cassette Sub-Family B Member 6 (ABCB6) Antibody

Catalogue No.: abx230032



WB analysis of Raji cells, using ABCB6 antibody (1/500 dilution).



IHC-P analysis of human breast cancer tissue, using ABCB6 antibody (1/50 dilution).

ABCB6 Antibody is a Rabbit Polyclonal against ABCB6.

Target:	ATP-Binding Cassette Sub-Family B Member 6 (ABCB6)
Clonality:	Polyclonal
Reactivity:	Human
Tested Applications:	ELISA, WB, IHC, IF/ICC
Host:	Rabbit
Recommended dilutions:	WB: 1/500 - 1/5000, IHC: 1/20 - 1/200, IF/ICC: 1/20 - 1/200. Optimal dilutions/concentrations should be determined by the end user.
Conjugation:	Unconjugated
Immunogen:	ATP-binding cassette, sub-family B (MDR/TAP), member 6
Isotype:	IgG
Form:	Liquid
Purity:	≥ 95% (SDS-PAGE)

Datasheet

Version: 3.0.0
Revision date: 15 Oct 2023



Purification:	Purified by immunogen affinity chromatography.
Storage:	Aliquot and store at -20°C. Avoid repeated freeze/thaw cycles.
Validity:	12 months.
UniProt Primary AC:	Q9NP58 (UniProt , ExPASy)
Gene Symbol:	ABCB6
GeneID:	10058
OMIM:	111600
NCBI Accession:	NP_005680.1, NM_005689.2
HGNC:	47
KEGG:	hsa:10058
Ensembl:	ENSG00000115657
String:	9606.ENSP00000265316
Molecular Weight:	Observed MW: 94 kDa
Buffer:	PBS, pH 7.3, with 0.02% sodium azide and 50% glycerol.
Concentration:	2 mg/ml
Note:	This product is for research use only.

For Reference Only