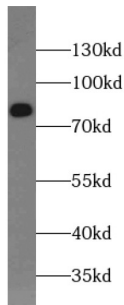
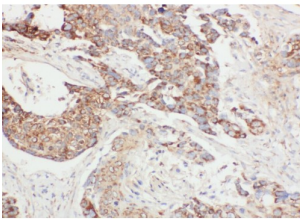


ATP Binding Cassette Subfamily D Member 1 (ABCD1) Antibody

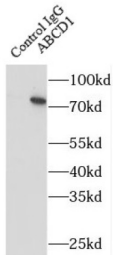
Catalogue No.: abx230035



WB analysis of human brain tissue, using ABCD1 antibody (1/300 dilution).



IHC-P analysis of human lung cancer tissue, using ABCD1 antibody (1/50 dilution).



IP analysis of mouse liver tissue lysate (5000 µg), using ABCD1 antibody (4 µg, detection: 1/500 dilution).

ABCD1 Antibody is a Rabbit Polyclonal against ABCD1.

Target: ATP Binding Cassette Subfamily D Member 1 (ABCD1)

Clonality: Polyclonal

Reactivity: Human, Mouse, Rat

Tested Applications: ELISA, WB, IHC, IP

Host: Rabbit

Recommended dilutions: WB: 1/500 - 1/5000, IHC: 1/20 - 1/200, IF/ICC: 1/20 - 1/200, IP: 1/200 - 1/2000. Optimal dilutions/concentrations should be determined by the end user.

Conjugation: Unconjugated

Datasheet

Version: 1.0.0
Revision date: 11 Feb 2025



Immunogen:	ATP-binding cassette, sub-family D(ALD), member 1
Isotype:	IgG
Form:	Liquid
Purity:	≥ 95% (SDS-PAGE)
Purification:	Purified by immunogen affinity chromatography.
Storage:	Aliquot and store at -20°C. Avoid repeated freeze/thaw cycles.
Validity:	12 months.
UniProt Primary AC:	P33897 (UniProt , ExpASY)
Gene Symbol:	ABCD1
GeneID:	215
OMIM:	300100
HGNC:	61
KEGG:	hsa:215
Ensembl:	ENSG00000101986
String:	9606.ENSP00000218104
Molecular Weight:	Observed MW: 80 kDa
Buffer:	PBS, pH 7.3, with 0.02% sodium azide and 50% glycerol.
Concentration:	2 mg/ml
Note:	This product is for research use only.