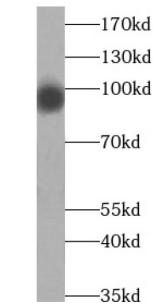
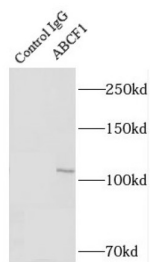


ATP Binding Cassette Subfamily F Member 1 (ABCF1) Antibody

Catalogue No.: abx230040



WB analysis of K-562 cells, using FNb00040 (ABCF1 antibody (1/1500 dilution)).



IP analysis of K-562 cell lysate (1200 µg), using ABCF1 antibody (4 µg, detection: 1/500 dilution).

ABCF1 Antibody is a Rabbit Polyclonal against ABCF1.

Target:	ATP Binding Cassette Subfamily F Member 1 (ABCF1)
Clonality:	Polyclonal
Reactivity:	Human, Mouse, Rat
Tested Applications:	ELISA, WB, IP
Host:	Rabbit
Recommended dilutions:	WB: 1/500 - 1/5000, IF/ICC: 1/20 - 1/200, IP: 1/200 - 1/2000. Optimal dilutions/concentrations should be determined by the end user.
Conjugation:	Unconjugated
Immunogen:	ATP-binding cassette, sub-family F(GCN20), member 1
Isotype:	IgG
Form:	Liquid
Purity:	≥ 95% (SDS-PAGE)

Datasheet

Version: 2.0.0
Revision date: 04 Dec 2024



Purification:	Purified by immunogen affinity chromatography.
Storage:	Aliquot and store at -20°C. Avoid repeated freeze/thaw cycles.
Validity:	12 months.
UniProt Primary AC:	Q8NE71 (UniProt , ExPASy)
Gene Symbol:	ABCF1
GeneID:	23
OMIM:	603429
HGNC:	70
KEGG:	hsa:23
Ensembl:	ENSG00000204574
String:	9606.ENSP00000313603
Molecular Weight:	Observed MW: 95 kDa
Buffer:	PBS, pH 7.3, with 0.02% sodium azide and 50% glycerol.
Concentration:	2 mg/ml
Note:	This product is for research use only.

For Reference Only