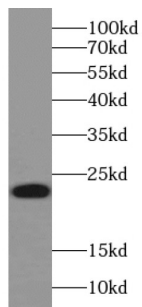
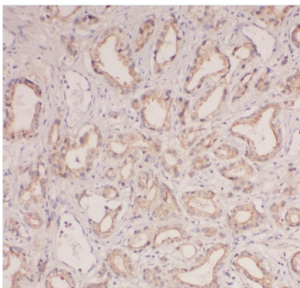


Putative Protein-Lysine Deacylase ABHD14B (ABHD14B) Antibody

Catalogue No.: abx230047



WB analysis of L02 cells, using ABHD14B antibody (1/400 dilution).



IHC-P analysis of human prostate hyperplasia tissue, using ABHD14B antibody (1/50 dilution).

ABHD14B Antibody is a Rabbit Polyclonal against ABHD14B.

Target:	Putative Protein-Lysine Deacylase ABHD14B (ABHD14B)
Clonality:	Polyclonal
Reactivity:	Human, Mouse, Rat
Tested Applications:	ELISA, WB, IHC, IF/ICC
Host:	Rabbit
Recommended dilutions:	WB: 1/500 - 1/5000, IHC: 1/20 - 1/200, IF/ICC: 1/10 - 1/100. Optimal dilutions/concentrations should be determined by the end user.
Conjugation:	Unconjugated
Immunogen:	abhydrolase domain containing 14B
Isotype:	IgG
Form:	Liquid
Purity:	≥ 95% (SDS-PAGE)

Datasheet

Version: 5.0.0
Revision date: 11 Mar 2025



Purification:	Purified by immunogen affinity chromatography.
Storage:	Aliquot and store at -20°C. Avoid repeated freeze/thaw cycles.
Validity:	12 months.
UniProt Primary AC:	Q96IU4 (UniProt , ExPASy)
Gene Symbol:	ABHD14B
GeneID:	84836
HGNC:	28235
KEGG:	hsa:84836
Ensembl:	ENSG00000114779
String:	9606.ENSP00000420065
Molecular Weight:	Observed MW: 22 kDa
Buffer:	PBS, pH 7.3, with 0.02% sodium azide and 50% glycerol.
Concentration:	2 mg/ml
Note:	THIS PRODUCT IS FOR RESEARCH USE ONLY. NOT FOR USE IN DIAGNOSTIC, THERAPEUTIC OR COSMETIC PROCEDURES. NOT FOR HUMAN OR ANIMAL CONSUMPTION.

For Reference Only