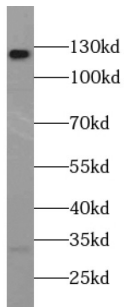
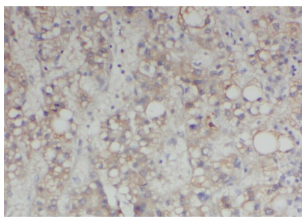


## Abelson Tyrosine-Protein Kinase 2 (ABL2) Antibody

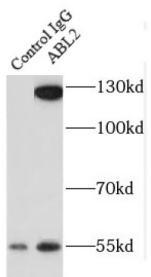
Catalogue No.: abx230053



WB analysis of HeLa cells, using ABL2 antibody (1/500 dilution).



IHC-P analysis of human liver cancer tissue, using ABL2 Antibody (1/50 dilution).



IP analysis of HeLa cell lysate (1200 µg), using ABL2 antibody (4 µg, detection: 1/500 dilution).

ABL2 Antibody is a Rabbit Polyclonal against ABL2.

<b>Target:</b>	Abelson Tyrosine-Protein Kinase 2 (ABL2)
<b>Clonality:</b>	Polyclonal
<b>Reactivity:</b>	Human, Mouse, Rat
<b>Tested Applications:</b>	ELISA, WB, IHC, IF/ICC, IP
<b>Host:</b>	Rabbit
<b>Recommended dilutions:</b>	WB: 1/500 - 1/5000, IHC: 1/20 - 1/200, IF/ICC: 1/10 - 1/100, IP: 1/200 - 1/2000. Optimal dilutions/concentrations should be determined by the end user.
<b>Conjugation:</b>	Unconjugated

# Datasheet

Version: 3.0.0  
Revision date: 14 Sep 2024



<b>Immunogen:</b>	v-abl Abelson murine leukemia viral oncogene homolog 2(arg, Abelson-related gene)
<b>Isotype:</b>	IgG
<b>Form:</b>	Liquid
<b>Purity:</b>	≥ 95% (SDS-PAGE)
<b>Purification:</b>	Purified by immunogen affinity chromatography.
<b>Storage:</b>	Aliquot and store at -20°C. Avoid repeated freeze/thaw cycles.
<b>Validity:</b>	12 months.
<b>UniProt Primary AC:</b>	P42684 ( <a href="#">UniProt</a> , <a href="#">ExPASy</a> )
<b>Gene Symbol:</b>	ABL2
<b>GeneID:</b>	<a href="#">27</a>
<b>OMIM:</b>	<a href="#">164690</a>
<b>HGNC:</b>	77
<b>KEGG:</b>	hsa:27
<b>Ensembl:</b>	ENSG00000143322
<b>String:</b>	<a href="#">9606.ENSP00000427562</a>
<b>Enzyme Commission Number:</b>	EC 2.7.10.2
<b>Molecular Weight:</b>	Observed MW: 127 kDa
<b>Buffer:</b>	PBS, pH 7.3, with 0.02% sodium azide and 50% glycerol.
<b>Concentration:</b>	2 mg/ml
<b>Note:</b>	This product is for research use only.