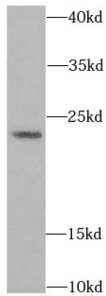
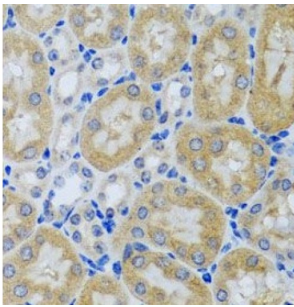


Acid Phosphatase 1 (ACP1) Antibody

Catalogue No.: abx230098



WB analysis of mouse brain tissue, using ACP1 antibody (1/1000 dilution).



IHC-P analysis of mouse kidney tissue, using ACP1 Antibody (1/50 dilution).

ACP1 Antibody is a Rabbit Polyclonal against ACP1.

Target: Acid Phosphatase 1 (ACP1)

Clonality: Polyclonal

Reactivity: Human, Mouse

Tested Applications: ELISA, WB, IHC

Host: Rabbit

Recommended dilutions: WB: 1/500 - 1/2000, IHC: 1/50 - 1/100. Optimal dilutions/concentrations should be determined by the end user.

Conjugation: Unconjugated

Immunogen: acid phosphatase 1, soluble

Isotype: IgG

Form: Liquid

Purity: ≥ 95% (SDS-PAGE)

Datasheet

Version: 3.0.0
Revision date: 22 Dec 2024



Purification:	Purified by immunogen affinity chromatography.
Storage:	Aliquot and store at -20°C. Avoid repeated freeze/thaw cycles.
Validity:	12 months.
UniProt Primary AC:	P24666 (UniProt , ExpASY)
KEGG:	hsa:52
Molecular Weight:	Observed MW: 18 kDa
Buffer:	PBS, pH 7.3, with 0.02% sodium azide and 50% glycerol.
Concentration:	2 mg/ml
Note:	This product is for research use only.

For Reference Only