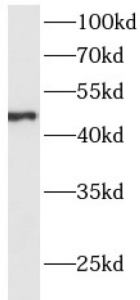
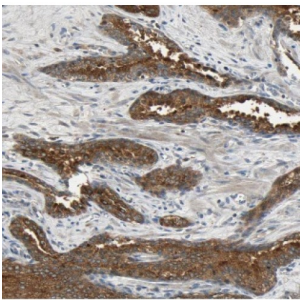


Acid Phosphatase 6, Lysophosphatidic (ACP6) Antibody

Catalogue No.: abx230101



WB analysis of human liver tissue, using ACP6 antibody (1/300 dilution).



IHC-P analysis of human prostate cancer tissue, using ACP6 antibody (1/100 dilution).

ACP6 Antibody is a Rabbit Polyclonal against ACP6.

Target: Acid Phosphatase 6, Lysophosphatidic (ACP6)

Clonality: Polyclonal

Reactivity: Human, Mouse

Tested Applications: ELISA, WB, IHC

Host: Rabbit

Recommended dilutions: WB: 1/200 - 1/2000, IHC: 1/20 - 1/200. Optimal dilutions/concentrations should be determined by the end user.

Conjugation: Unconjugated

Immunogen: acid phosphatase 6, lysophosphatidic

Isotype: IgG

Form: Liquid

Purity: ≥ 95% (SDS-PAGE)

Datasheet

Version: 1.0.0
Revision date: 27 Dec 2024



| | |
|----------------------------|--|
| Purification: | Purified by immunogen affinity chromatography. |
| Storage: | Aliquot and store at -20°C. Avoid repeated freeze/thaw cycles. |
| Validity: | 12 months. |
| UniProt Primary AC: | Q9NPH0 (UniProt , ExPASy) |
| Gene Symbol: | ACP6 |
| GeneID: | 51205 |
| OMIM: | 611471 |
| HGNC: | 29609 |
| Ensembl: | ENSG00000162836 |
| String: | 9606.ENSP00000463574 |
| Molecular Weight: | Observed MW: 49 kDa |
| Buffer: | PBS, pH 7.3, with 0.02% sodium azide and 50% glycerol. |
| Concentration: | 2 mg/ml |
| Note: | This product is for research use only. |

For Reference Only