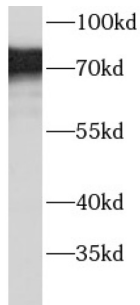


Acyl-CoA Synthetase Short-Chain Family Member 1 (ACSS1) Antibody

Catalogue No.: abx230113



WB analysis of mouse kidney tissue, using ACSS1 antibody (1/3000 dilution).

ACSS1 Antibody is a Rabbit Polyclonal against ACSS1.

Target:	Acyl-CoA Synthetase Short-Chain Family Member 1 (ACSS1)
Clonality:	Polyclonal
Reactivity:	Human, Mouse, Rat
Tested Applications:	ELISA, WB
Host:	Rabbit
Recommended dilutions:	WB: 1/1000 - 1/10000, IP: 1/200 - 1/2000. Optimal dilutions/concentrations should be determined by the end user.
Conjugation:	Unconjugated
Immunogen:	acyl-CoA synthetase short-chain family member 1
Isotype:	IgG
Form:	Liquid
Purity:	≥ 95% (SDS-PAGE)
Purification:	Purified by immunogen affinity chromatography.
Storage:	Aliquot and store at -20°C. Avoid repeated freeze/thaw cycles.
Validity:	12 months.
UniProt Primary AC:	Q9NUB1 (UniProt , ExPASy)

Datasheet

Version: 1.0.0
Revision date: 15 Jan 2025



Gene Symbol: ACSS1

GeneID: [84532](#)

OMIM: [614355](#)

HGNC: 16091

Ensembl: ENSG00000154930

String: [9606.ENSP00000316924](#)

Molecular Weight: Observed MW: 75 kDa

Buffer: PBS, pH 7.3, with 0.02% sodium azide and 50% glycerol.

Concentration: 2 mg/ml

Note: This product is for research use only.

For Reference Only