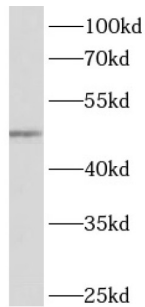


## Actin Like 7A (ACTL7A) Antibody

Catalogue No.: abx230119



WB analysis of mouse testis tissue, using ACTL7A antibody (1/800 dilution).

ACTL7A Antibody is a Rabbit Polyclonal against ACTL7A.

<b>Target:</b>	Actin Like 7A (ACTL7A)
<b>Clonality:</b>	Polyclonal
<b>Reactivity:</b>	Human, Mouse, Rat
<b>Tested Applications:</b>	ELISA, WB, IF/ICC
<b>Host:</b>	Rabbit
<b>Recommended dilutions:</b>	WB: 1/200 - 1/2000, IF/ICC: 1/10 - 1/100. Optimal dilutions/concentrations should be determined by the end user.
<b>Conjugation:</b>	Unconjugated
<b>Immunogen:</b>	actin-like 7A
<b>Isotype:</b>	IgG
<b>Form:</b>	Liquid
<b>Purity:</b>	≥ 95% (SDS-PAGE)
<b>Purification:</b>	Purified by immunogen affinity chromatography.
<b>Storage:</b>	Aliquot and store at -20°C. Avoid repeated freeze/thaw cycles.
<b>Validity:</b>	12 months.
<b>UniProt Primary AC:</b>	Q9Y615 ( <a href="#">UniProt</a> , <a href="#">ExPASy</a> )

# Datasheet

Version: 1.0.0  
Revision date: 22 Dec 2024



**Gene Symbol:** ACTL7A

**GeneID:** [10881](#)

**OMIM:** [604303](#)

**HGNC:** 161

**Ensembl:** ENSG00000187003

**String:** [9606.ENSP00000334300](#)

**Molecular Weight:** Observed MW: 49 kDa

**Buffer:** PBS, pH 7.3, with 0.02% sodium azide and 50% glycerol.

**Concentration:** 2 mg/ml

**Note:** This product is for research use only.

For Reference Only