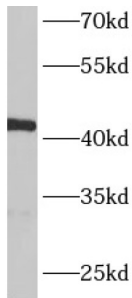
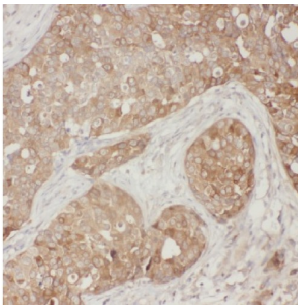


Beta-Centractin (ACTR1B) Antibody

Catalogue No.: abx230126



WB analysis of mouse heart tissue, using ACTR1B antibody (1/600 dilution).



IHC-P analysis of human breast cancer tissue, using ACTR1B antibody (1/50 dilution).

ACTR1B Antibody is a Rabbit Polyclonal against ACTR1B.

Target:	Beta-Centractin (ACTR1B)
Clonality:	Polyclonal
Reactivity:	Human, Mouse, Rat
Tested Applications:	ELISA, WB, IHC, IF/ICC
Host:	Rabbit
Recommended dilutions:	WB: 1/200 - 1/2000, IHC: 1/20 - 1/200, IF/ICC: 1/20 - 1/200. Optimal dilutions/concentrations should be determined by the end user.
Conjugation:	Unconjugated
Immunogen:	ARP1 actin-related protein 1 homolog B, centractin beta (yeast)
Isotype:	IgG
Form:	Liquid
Purity:	≥ 95% (SDS-PAGE)

Datasheet

Version: 2.0.0
Revision date: 31 Dec 2024



Purification:	Purified by immunogen affinity chromatography.
Storage:	Aliquot and store at -20°C. Avoid repeated freeze/thaw cycles.
Validity:	12 months.
UniProt Primary AC:	P42025 (UniProt , ExpASY)
Gene Symbol:	ACTR1B
GeneID:	10120
OMIM:	605144
HGNC:	168
KEGG:	hsa:10120
Ensembl:	ENSG00000115073
String:	9606.ENSP00000289228
Molecular Weight:	Observed MW: 42 kDa
Buffer:	PBS, pH 7.3, with 0.02% sodium azide and 50% glycerol.
Concentration:	2 mg/ml
Note:	This product is for research use only.

For Reference Only