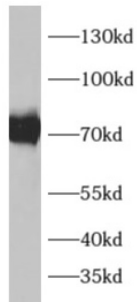
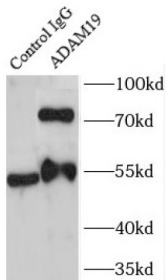


## ADAM Metallopeptidase Domain 19 (ADAM19) Antibody

Catalogue No.: abx230140



WB analysis of NIH/3T3 cells, using ADAM19 antibody (1/300 dilution).



IP analysis of NIH/3T3 cell lysate (1200 µg), using ADAM19 antibody (4 µg, detection: 1/300 dilution).

ADAM19 Antibody is a Rabbit Polyclonal against ADAM19.

<b>Target:</b>	ADAM Metallopeptidase Domain 19 (ADAM19)
<b>Clonality:</b>	Polyclonal
<b>Reactivity:</b>	Human, Mouse
<b>Tested Applications:</b>	ELISA, WB, IP
<b>Host:</b>	Rabbit
<b>Recommended dilutions:</b>	WB: 1/200 - 1/1000, IP: 1/200 - 1/1000. Optimal dilutions/concentrations should be determined by the end user.
<b>Conjugation:</b>	Unconjugated
<b>Immunogen:</b>	ADAM metallopeptidase domain 19(meltrin beta)
<b>Isotype:</b>	IgG
<b>Form:</b>	Liquid
<b>Purity:</b>	≥ 95% (SDS-PAGE)

# Datasheet

Version: 3.0.0  
Revision date: 13 Mar 2025



<b>Purification:</b>	Purified by immunogen affinity chromatography.
<b>Storage:</b>	Aliquot and store at -20°C. Avoid repeated freeze/thaw cycles.
<b>Validity:</b>	12 months.
<b>UniProt Primary AC:</b>	Q9H013 ( <a href="#">UniProt</a> , <a href="#">ExPASy</a> )
<b>Gene Symbol:</b>	ADAM19
<b>GeneID:</b>	<a href="#">8728</a>
<b>OMIM:</b>	<a href="#">603640</a>
<b>HGNC:</b>	197
<b>Ensembl:</b>	ENSG00000135074
<b>String:</b>	<a href="#">9606.ENSP00000257527</a>
<b>Molecular Weight:</b>	Observed MW: 70 kDa
<b>Buffer:</b>	PBS, pH 7.3, with 0.02% sodium azide and 50% glycerol.
<b>Concentration:</b>	2 mg/ml
<b>Note:</b>	THIS PRODUCT IS FOR RESEARCH USE ONLY. NOT FOR USE IN DIAGNOSTIC, THERAPEUTIC OR COSMETIC PROCEDURES. NOT FOR HUMAN OR ANIMAL CONSUMPTION.

For Reference Only