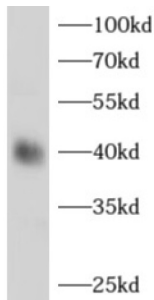


Alcohol Dehydrogenase 1B (ADH1B) Antibody

Catalogue No.: abx230162



WB analysis of mouse liver tissue, using ADH1B antibody (1/1000 dilution).

ADH1B Antibody is a Rabbit Polyclonal against ADH1B.

Target:	Alcohol Dehydrogenase 1B (ADH1B)
Clonality:	Polyclonal
Reactivity:	Human, Mouse, Rat
Tested Applications:	ELISA, WB
Host:	Rabbit
Recommended dilutions:	WB: 1/500 - 1/5000. Optimal dilutions/concentrations should be determined by the end user.
Conjugation:	Unconjugated
Immunogen:	alcohol dehydrogenase 1B (class I) , beta polypeptide
Isotype:	IgG
Form:	Liquid
Purity:	≥ 95% (SDS-PAGE)
Purification:	Purified by immunogen affinity chromatography.
Storage:	Aliquot and store at -20°C. Avoid repeated freeze/thaw cycles.
Validity:	12 months.
UniProt Primary AC:	P00325 (UniProt , ExpASY)

Datasheet

Version: 2.0.0
Revision date: 31 Jan 2025



Gene Symbol:	ADH1B
GeneID:	125
OMIM:	103720
HGNC:	250
KEGG:	hsa:125
Ensembl:	ENSG00000196616
String:	9606.ENSP00000306606
Molecular Weight:	Observed MW: 40 kDa
Buffer:	PBS, pH 7.3, with 0.02% sodium azide and 50% glycerol.
Concentration:	2 mg/ml
Note:	This product is for research use only.

For Reference Only