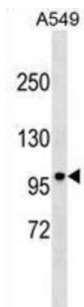


## Disrupted In Schizophrenia 1 Protein (DISC1) Antibody

Catalogue No.: abx025479



This gene encodes a protein with multiple coiled coil motifs which is located in the nucleus, cytoplasm and mitochondria. The protein is involved in neurite outgrowth and cortical development through its interaction with other proteins. This gene is disrupted in a t (1;11) (q42.1;q14.3) translocation which segregates with schizophrenia and related psychiatric disorders in a large Scottish family. Alternate transcriptional splice variants, encoding different isoforms, have been characterized. [provided by RefSeq]. This antibody is supplied as crude ascites.

|                               |   |
|-------------------------------|---|
| <b>Target:</b>                | Disrupted In Schizophrenia 1 Protein (DISC1)  |
| <b>Clonality:</b>             | Monoclonal  |
| <b>Reactivity:</b>            | Human   |
| <b>Tested Applications:</b>   | ELISA, WB   |
| <b>Host:</b>                  | Mouse   |
| <b>Recommended dilutions:</b> | WB: 1/100 - 1/8000. Optimal dilutions/concentrations should be determined by the end user.              |
| <b>Conjugation:</b>           | Unconjugated  |
| <b>Immunogen:</b>             | KLH-conjugated synthetic peptide between 701-728 amino acids from the C-terminal region of human DISC1. |
| <b>Isotype:</b>               | IgM   |
| <b>Form:</b>                  | Liquid  |
| <b>Purification:</b>          | Unpurified crude ascites.   |
| <b>Storage:</b>               | Aliquot and store at -20°C. Avoid repeated freeze/thaw cycles.  |
| <b>UniProt Primary AC:</b>    | Q9NRI5 ( <a href="#">UniProt</a> , <a href="#">ExpASY</a> )   |

# Datasheet

Version: 1.0.0  
Revision date: 23 Feb 2025



**String:** [9606.ENSF00000355593](#)

**Molecular Weight:** Calculated MW: 93.6 kDa

**Buffer:** Ascites containing 0.09% sodium azide.

**Note:** This product is for research use only.

For Reference Only