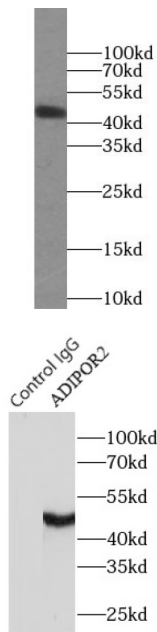


## Adiponectin Receptor 2 (ADIPOR2) Antibody

Catalogue No.: abx230171



WB analysis of L02 cells, using ADIPOR2 antibody (1/500 dilution).

IP analysis of HeLa cell lysate (2800 µg), using ADIPOR2 antibody (4 µg, detection: 1/500 dilution).

ADIPOR2 Antibody is a Rabbit Polyclonal against ADIPOR2.

**Target:** Adiponectin Receptor 2 (ADIPOR2)

**Clonality:** Polyclonal

**Reactivity:** Human, Mouse, Rat

**Tested Applications:** ELISA, WB, IP

**Host:** Rabbit

**Recommended dilutions:** WB: 1/200 - 1/2000, IP: 1/200 - 1/2000. Optimal dilutions/concentrations should be determined by the end user.

**Conjugation:** Unconjugated

**Immunogen:** adiponectin receptor 2

**Isotype:** IgG

**Form:** Liquid

**Purity:** ≥ 95% (SDS-PAGE)

# Datasheet

Version: 1.0.0  
Revision date: 22 Dec 2024



<b>Purification:</b>	Purified by immunogen affinity chromatography.
<b>Storage:</b>	Aliquot and store at -20°C. Avoid repeated freeze/thaw cycles.
<b>Validity:</b>	12 months.
<b>UniProt Primary AC:</b>	Q86V24 ( <a href="#">UniProt</a> , <a href="#">ExPASy</a> )
<b>Gene Symbol:</b>	ADIPOR2
<b>KEGG:</b>	hsa:79602
<b>String:</b>	<a href="#">9606.ENSP00000349616</a>
<b>Molecular Weight:</b>	Observed MW: 44 kDa
<b>Buffer:</b>	PBS, pH 7.3, with 0.02% sodium azide and 50% glycerol.
<b>Concentration:</b>	2 mg/ml
<b>Note:</b>	This product is for research use only.

For Reference Only