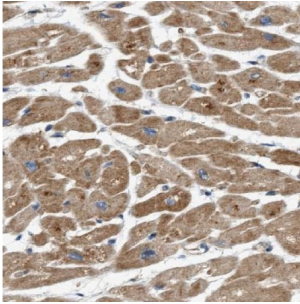


## Adrenomedullin 2 (ADM2) Antibody

Catalogue No.: abx230173



IHC-P analysis of human heart tissue, using ADM2 Antibody (1/50 dilution).

ADM2 Antibody is a Rabbit Polyclonal against ADM2.

**Target:** Adrenomedullin 2 (ADM2)**Clonality:** Polyclonal**Reactivity:** Human**Tested Applications:** ELISA, IHC**Host:** Rabbit**Recommended dilutions:** IHC: 1/20 - 1/200. Optimal dilutions/concentrations should be determined by the end user.**Conjugation:** Unconjugated**Immunogen:** adrenomedullin 2**Isotype:** IgG**Form:** Liquid**Purity:** ≥ 95% (SDS-PAGE)**Purification:** Purified by immunogen affinity chromatography.**Storage:** Aliquot and store at -20°C. Avoid repeated freeze/thaw cycles.**Validity:** 12 months.**UniProt Primary AC:** Q7Z4H4 ([UniProt](#), [ExpASY](#))

# Datasheet

Version: 1.0.0  
Revision date: 23 Feb 2025



**KEGG:** hsa:79924

**String:** [9606.ENSP00000379087](#)

**Molecular Weight:** Observed MW: 16 kDa

**Buffer:** PBS, pH 7.3, with 0.02% sodium azide and 50% glycerol.

**Concentration:** 2 mg/ml

**Note:** This product is for research use only.

For Reference Only