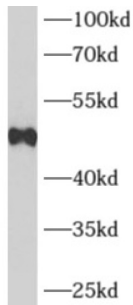
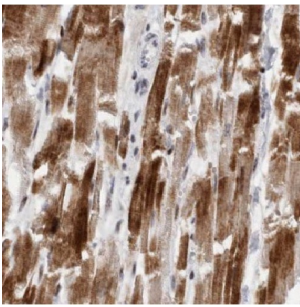


Beta-2 Adrenergic Receptor (ADRB2) Antibody

Catalogue No.: abx230180



WB analysis of mouse heart tissue, using ADRB2 antibody (1/1000 dilution).



IHC-P analysis of human heart tissue, using ADRB2 Antibody (1/50 dilution).

ADRB2 Antibody is a Rabbit Polyclonal against ADRB2.

Target:	Beta-2 Adrenergic Receptor (ADRB2)
Clonality:	Polyclonal
Reactivity:	Human, Mouse, Rat
Tested Applications:	ELISA, WB, IHC
Host:	Rabbit
Recommended dilutions:	WB: 1/500 - 1/5000, IHC: 1/50 - 1/200. Optimal dilutions/concentrations should be determined by the end user.
Conjugation:	Unconjugated
Immunogen:	adrenergic, beta-2-, receptor, surface
Isotype:	IgG
Form:	Liquid
Purity:	≥ 95% (SDS-PAGE)

Datasheet

Version: 3.0.0
Revision date: 11 Feb 2025



Purification:	Purified by immunogen affinity chromatography.
Storage:	Aliquot and store at -20°C. Avoid repeated freeze/thaw cycles.
Validity:	12 months.
UniProt Primary AC:	P07550 (UniProt , ExPASy)
Gene Symbol:	ADRB2
GeneID:	154
OMIM:	109690
HGNC:	286
KEGG:	hsa:154
Ensembl:	ENSG00000169252
String:	9606.ENSP00000305372
Molecular Weight:	Observed MW: 47 kDa
Buffer:	PBS, pH 7.3, with 0.02% sodium azide and 50% glycerol.
Concentration:	2 mg/ml
Note:	This product is for research use only.

For Reference Only